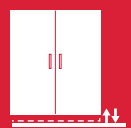
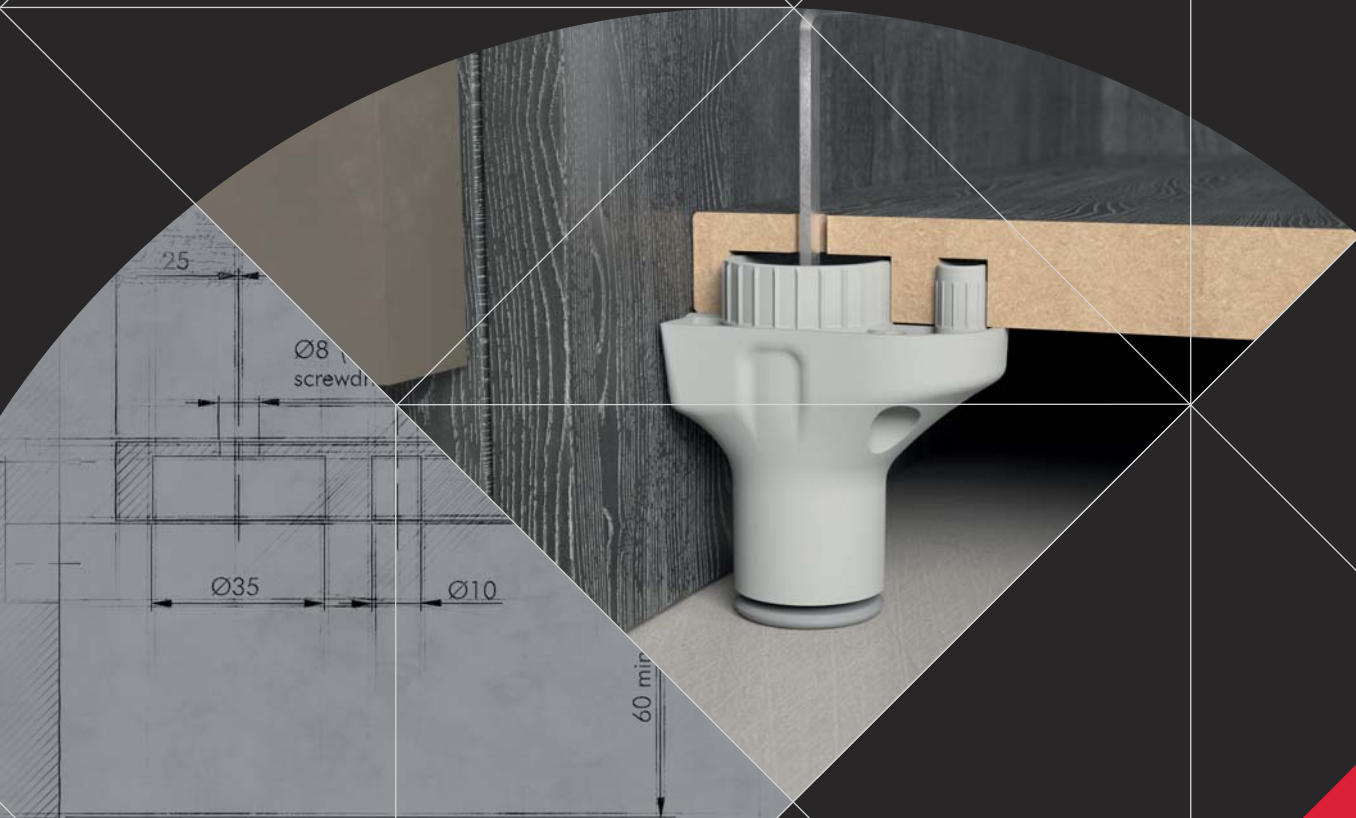


## ATACAMA



LEVELLERS



## ATACAMA



**ATACAMA** is a strong leveller to align heavy duty wardrobes, bookcases and modular furniture.

It is fixed on the furniture bottom through two housings, in order to provide an easier and more stable installation. It is also suitable for 60 mm plinths.

A lateral pin slots into the furniture side to achieve a structural connection, as well as an equal load distribution over the furniture side and base.

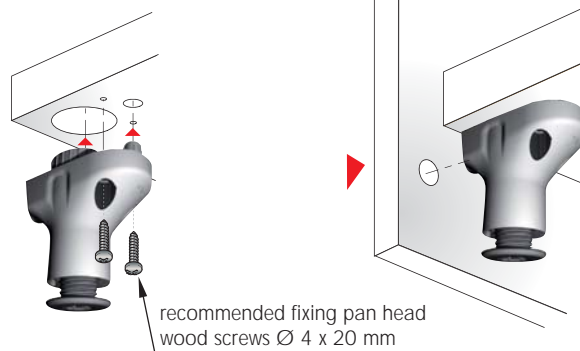
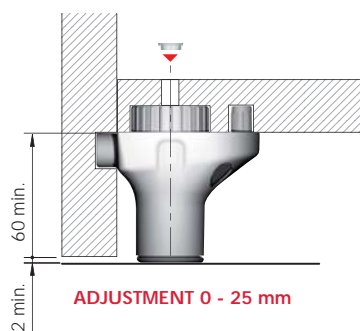
Then, two screws secure Atacama to the furniture bottom. A Ø 8 mm through hole in the bottom panel allows to adjust the leveller from above, by using a S6 mm allen wrench or a 1x5.5 mm blade screwdriver.

**ATACAMA** is capable of supporting a 175 kg load each and has 25 mm adjustment.

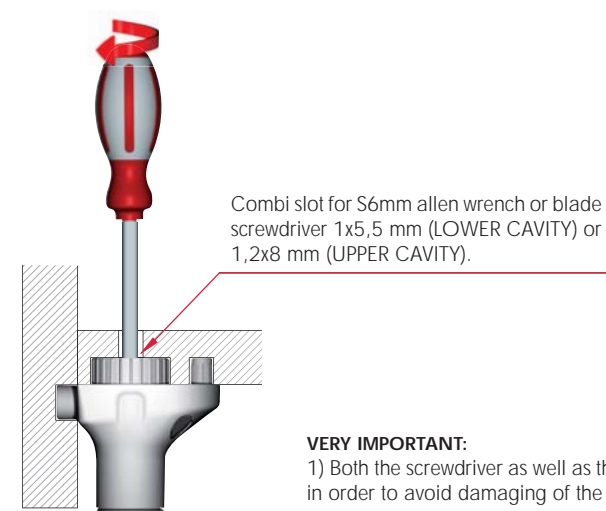
175 kg per piece



### INSTALLATION



### ADJUSTMENT



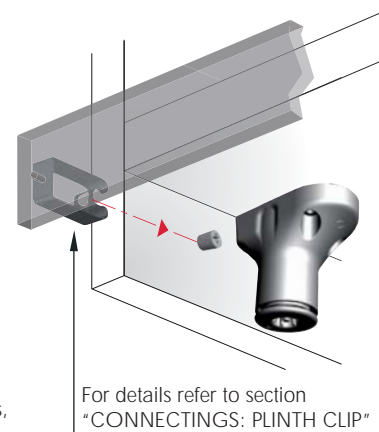
#### VERY IMPORTANT:

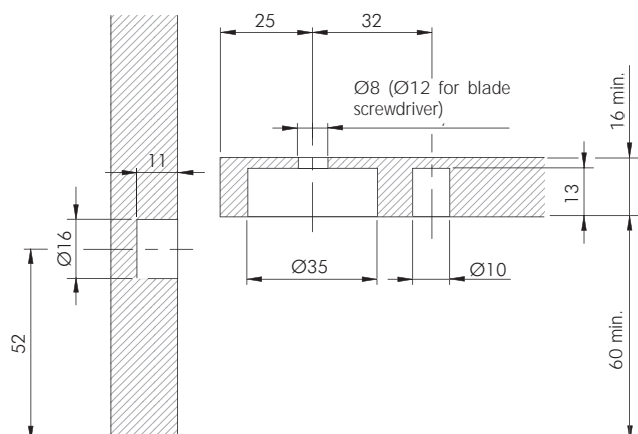
1) Both the screwdriver as well as the allen wrench must be fully inserted in the cavities, in order to avoid damaging of the engineering plastic sockets.

2) Loading capacity = 175kg each.

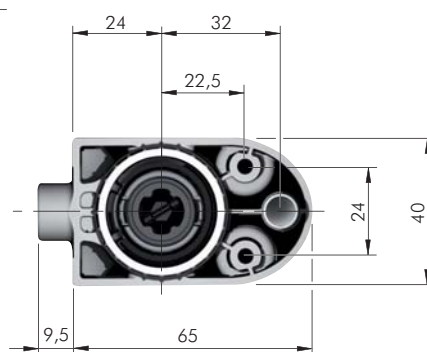
However, notice that with furniture already loaded:

- Adjustment capacity through S6 mm allen wrench  $\leq 175$ kg.
- Adjustment capacity through 1x5,5 mm blade screwdriver (LOWER SLOT)  $\leq 63$ kg.
- Adjustment capacity through 1,2x8 mm blade screwdriver (HIGHER SLOT)  $\leq 63$ kg.

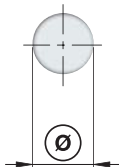
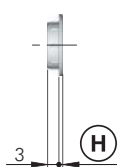
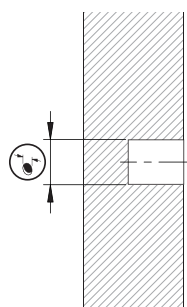




= S6	= 1x5,5 mm (LOWER SLOT) 1,2x8 mm (HIGHER SLOT)
EP	= 70 pcs.
123	
31601000IJ	

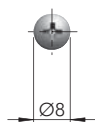
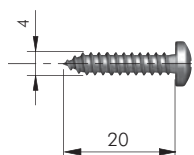


## ATACAMA ACCESSORY



= Ø 8, Ø 12 mm				
EP				
123				
23002010AB	Ø 8	Ø 11	1	5.000
23002030AB	Ø 12	Ø 15	1	5.000

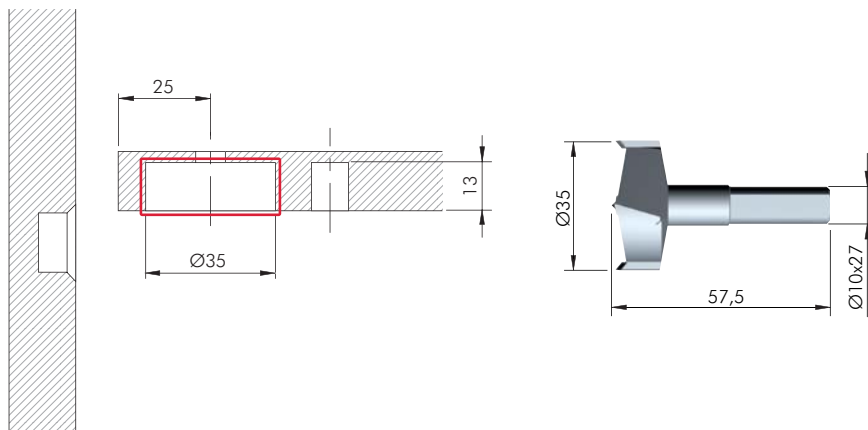
## ATACAMA FIXING ACCESSORY




		= PZ2	
ST	= 500 pcs.		
123			
60103270ZN			



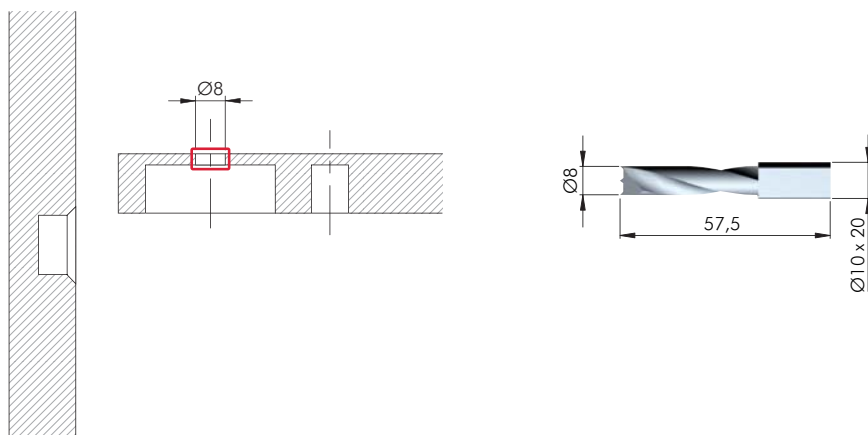
## DRILL BIT FOR ATACAMA




HSS

 = on request

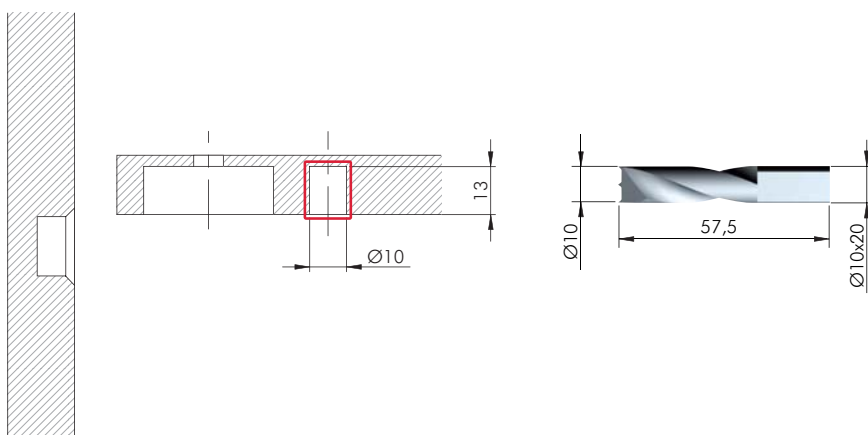
3175201000




HSS

 = on request

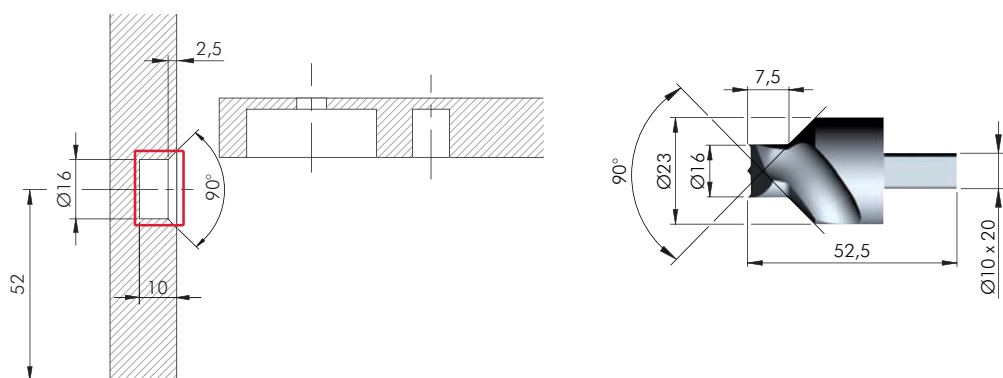
1145202000




HSS

 = on request

1220101000



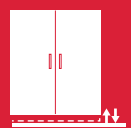
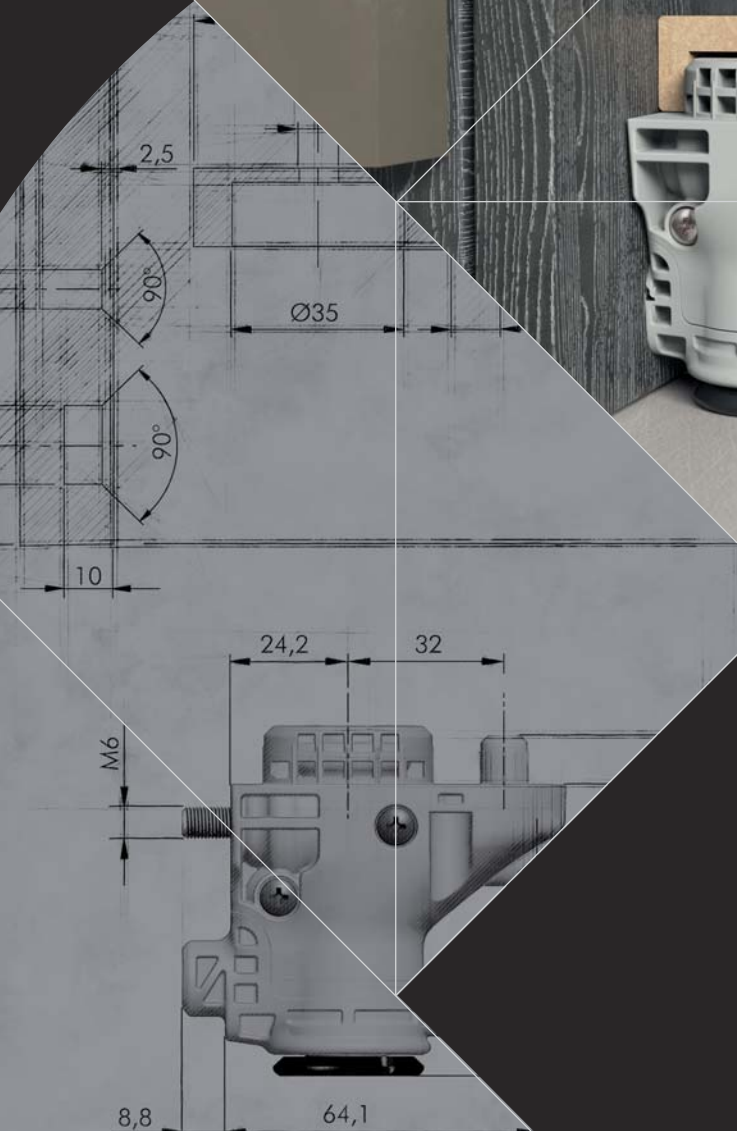
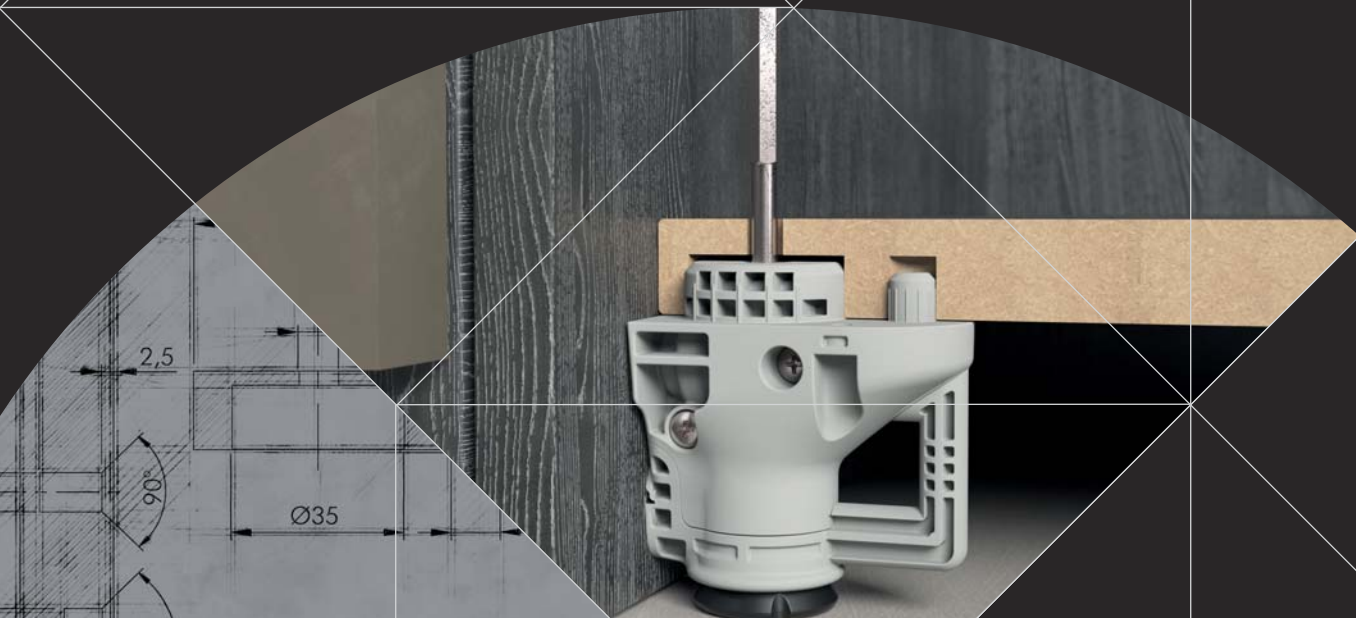
HSS

 = on request

3175202000



## ATACAMA J



LEVELLERS



## ATACAMA J



**ATACAMA J** is a strong leveller to align heavy duty wardrobes, bookcases and modular furniture with an integrated connecting system.

It is fixed on the furniture bottom through two housings, in order to provide an easier and more stable installation. It is also suitable for 60 mm plinths.

The **ATACAMA J** installation is very easy thanks to a M6 pin that can be screwed into an insert nut placed in the side panel.

A lateral pin slots into the furniture side to achieve a structural connection, as well as an equal load distribution over the furniture side and base. Then, two screws secure Atacama J to the furniture bottom. A Ø 8 mm through hole in the furniture bottom, allows to connect the bottom panel to the side first and then, by lowering the hexagonal bit of the key, to adjust the height of the construction without interfering with the side connection.

The zinc alloy die-cast foot is provided with an independent engineering plastic glide in order to make the adjustment easier and to prevent the scratching of the floor.

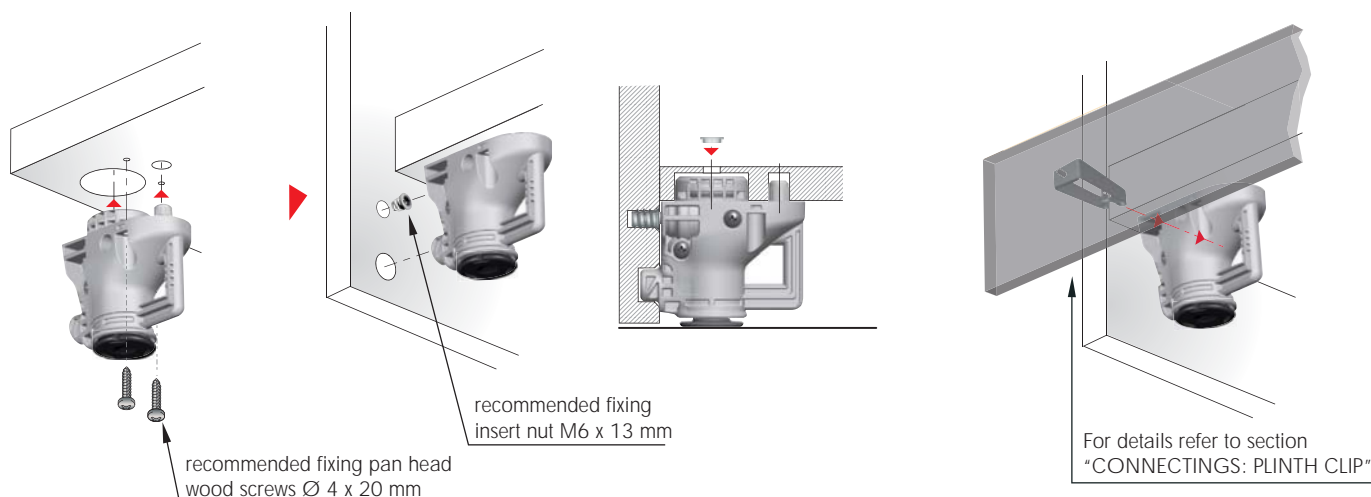


interzum award:  
intelligent  
material & design  
2009

175 kg per piece

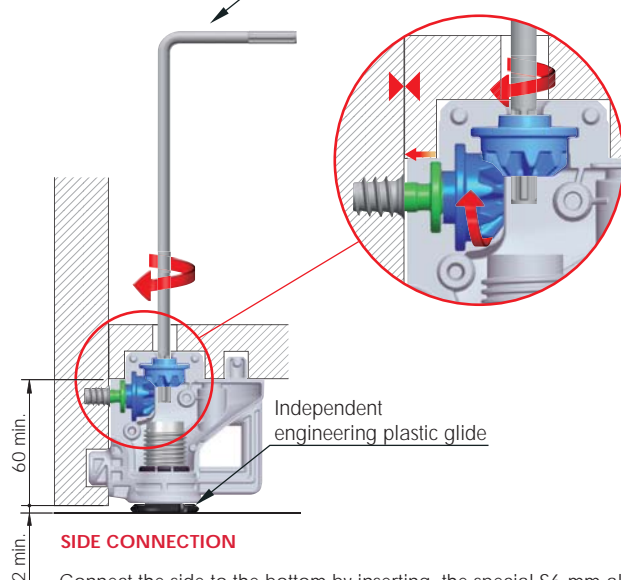


### INSTALLATION



#### STEP 1

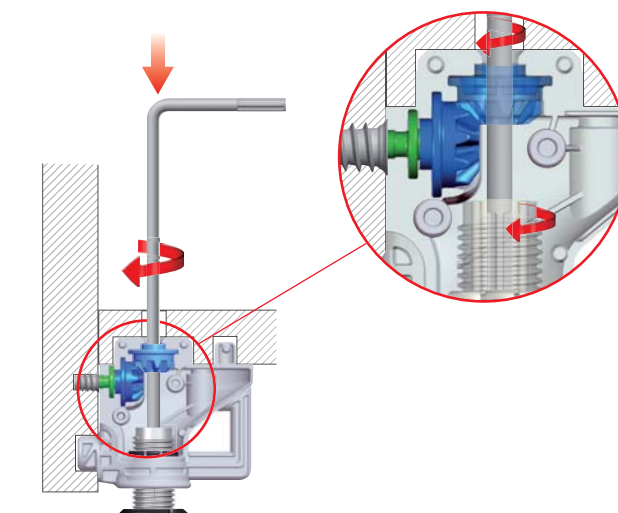
Special S6 allen wrench



#### SIDE CONNECTION

Connect the side to the bottom by inserting the special S6 mm allen wrench with hexagonal bit into the through hole, until it fits into the first cavity.

#### STEP 2



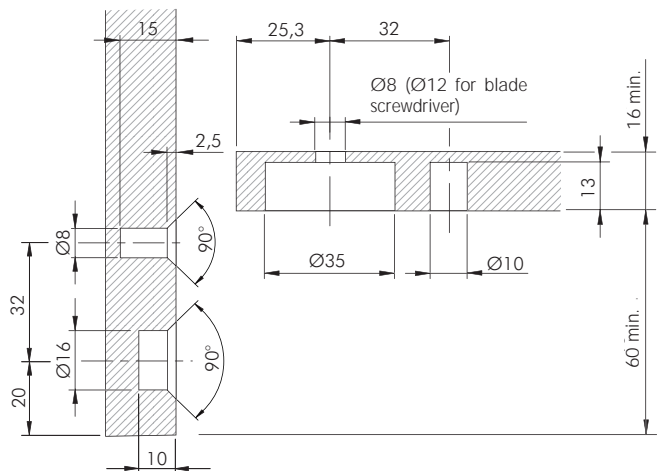
#### ADJUSTMENT 0 - 25 mm

Adjust the height of the construction by lowering the hexagonal bit until it fits the cavity of the die-cast foot.





## ATACAMA J : APPLICATION FOR SIDE PANEL



Ø8 = M6 Ø12 = special S6

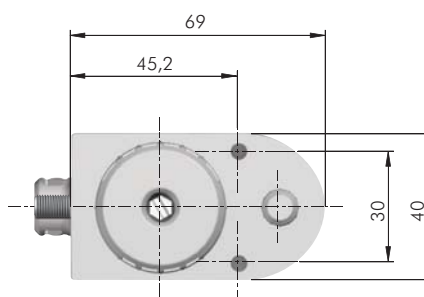
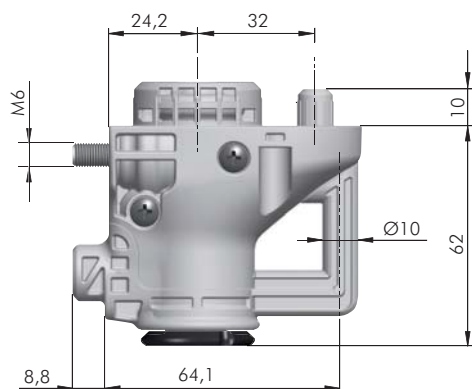
ZA EP ST

70 pcs.

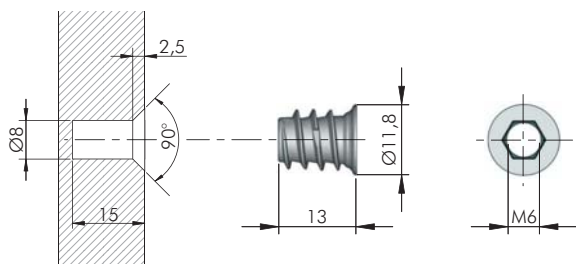


31701000IJ

Special allen wrench is required part no. 31702000ZN.



## ATACAMA J FIXING ACCESSORIES FOR SIDE PANEL



Ø 8 mm

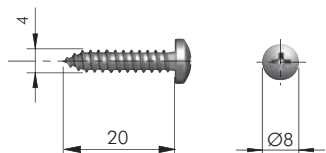
M6 S6

ZA

5.000 pcs.



20102020GR



PZ2

ST

500 pcs.



60103270ZN



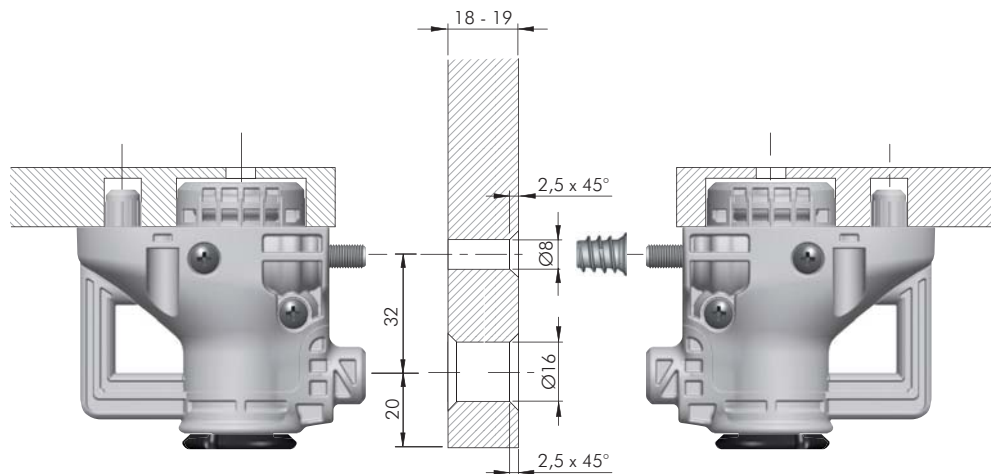


LEVELLERS

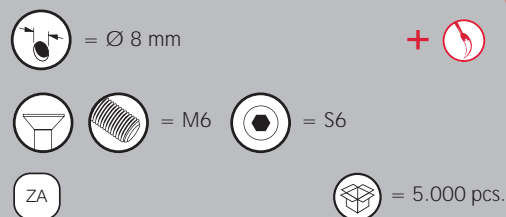
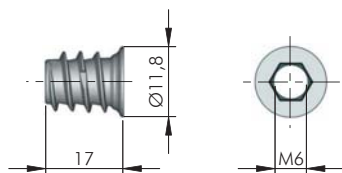
ATACAMA J

ITALIANA<sup>®</sup>  
ferramenta

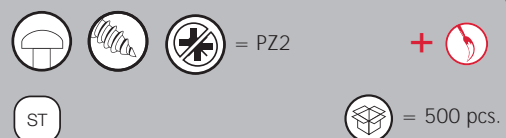
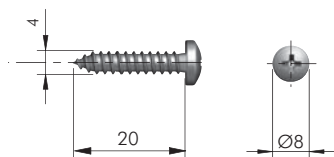
## ATACAMA J: APPLICATION FOR PARTITION 18 - 19 mm THICK



## ATACAMA J FIXING ACCESSORIES FOR PARTITION 18 - 19 mm THICK



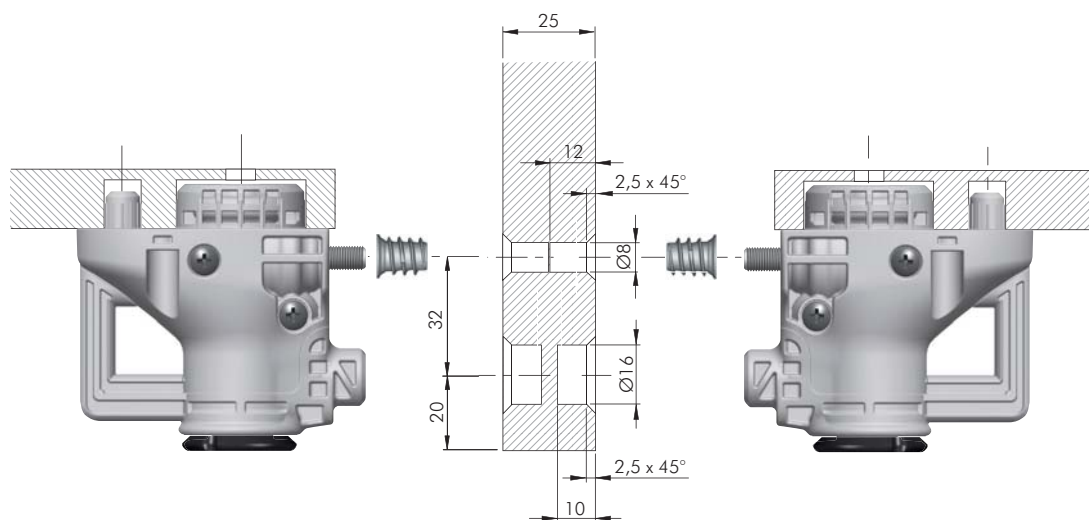
20102040GR



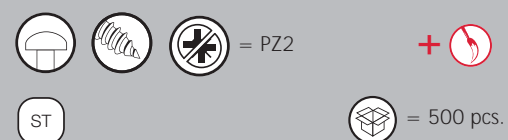
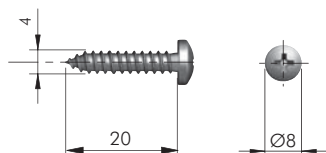
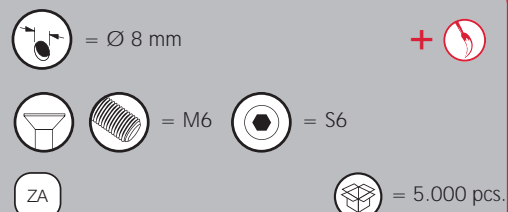
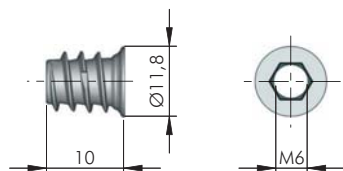
60103270ZN



## ATACAMA J: APPLICATION FOR PARTITION 25 mm THICK



## ATACAMA J FIXING ACCESSORIES FOR PARTITION 25 mm THICK




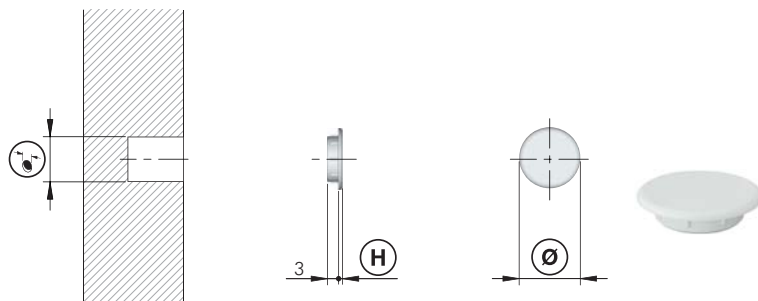


LEVELLERS

ATACAMA J

**ITALIANA**  
ferramenta

## ATACAMA J ACCESSORIES

 = Ø 8, Ø 12 mm

EP



23002010AB



Ø 8



Ø 11



1



5.000


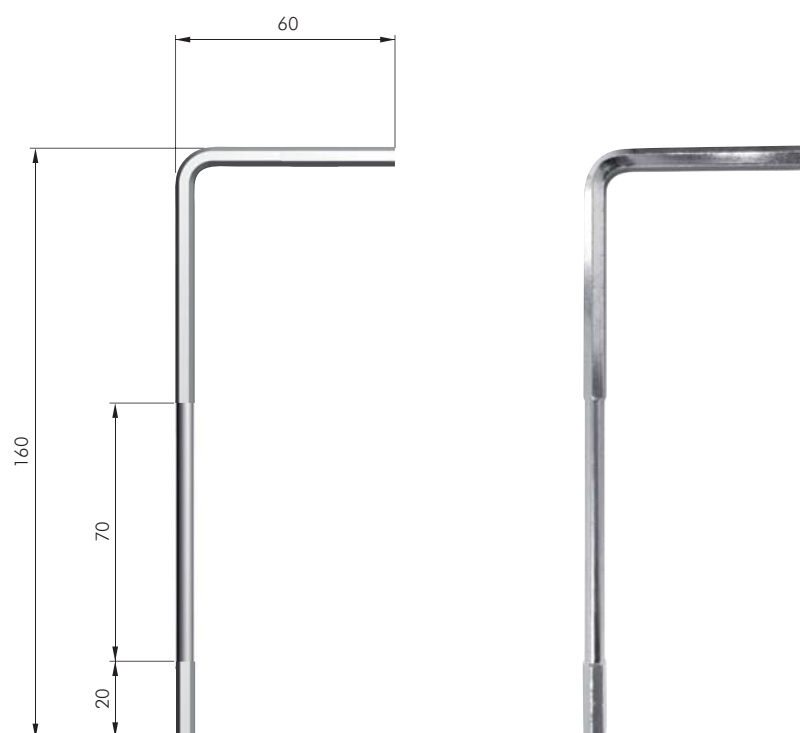
23002030AB

Ø 12


Ø 15

1

5.000

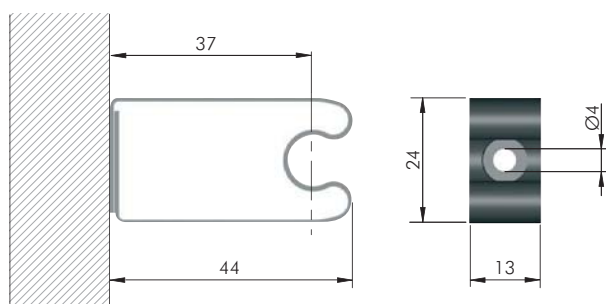
 = special S6

ST


 = on request

31702000ZN

## PLINTH CLIP FOR ATACAMA J



ST

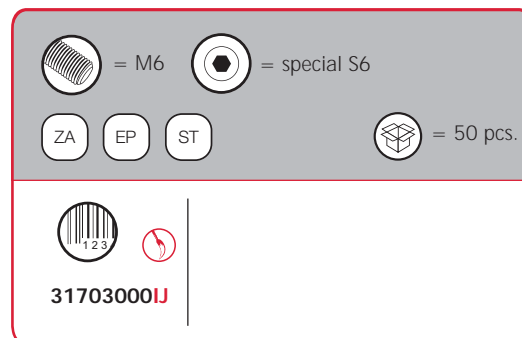
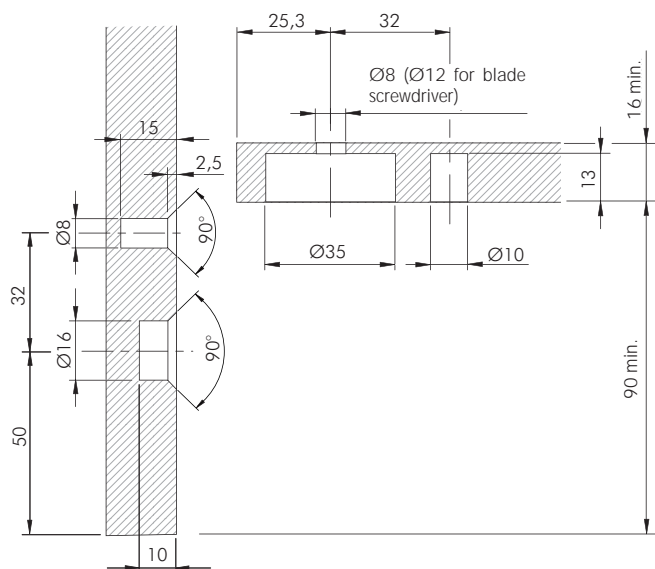
 = 1.000 pcs.

31501030WI

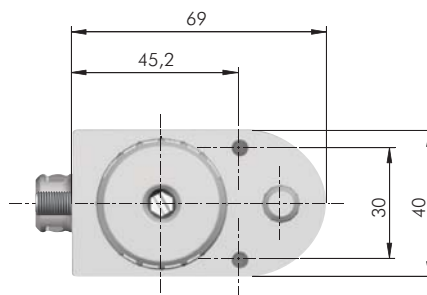
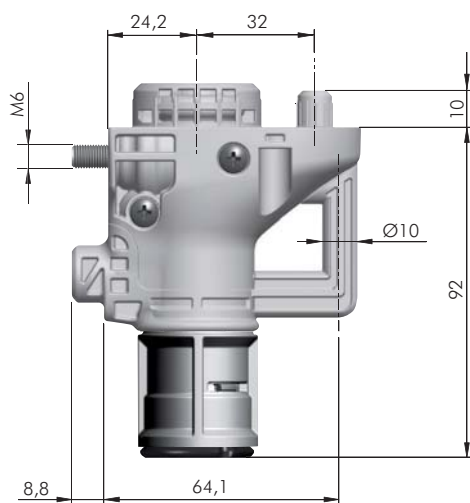


## OPTIONAL VERSION

## ATACAMA J WITH HEIGHT ADAPTER

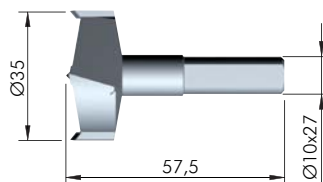
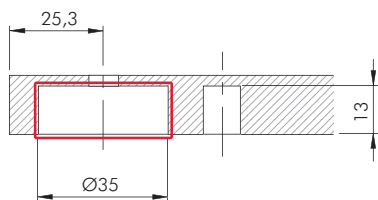
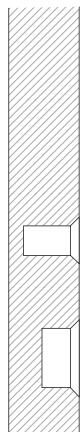


Special allen wrench is required part no. 31702000ZN.





## DRILL BIT FOR ATACAMA J

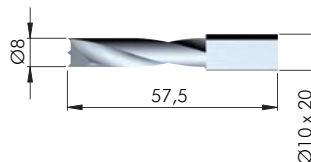
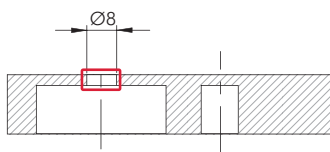
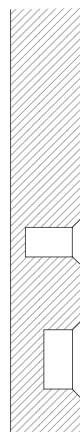


HSS

= on request



3175201000

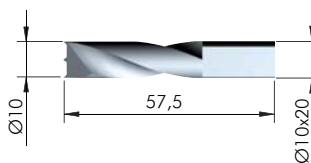
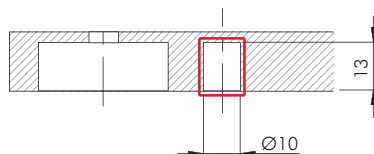
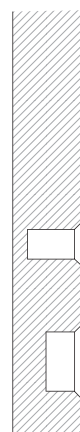


HSS

= on request



1145202000

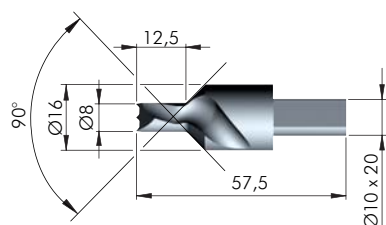
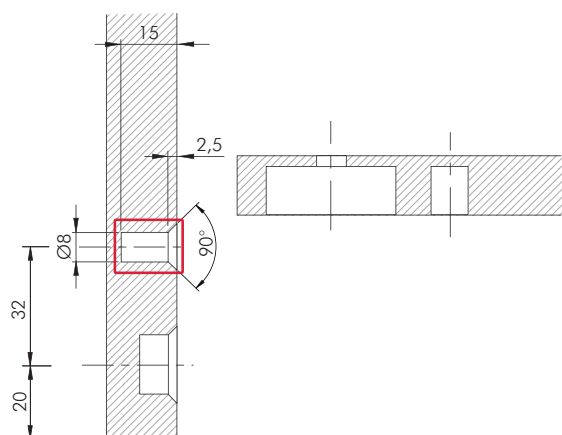


HSS

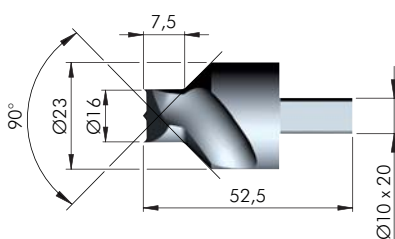
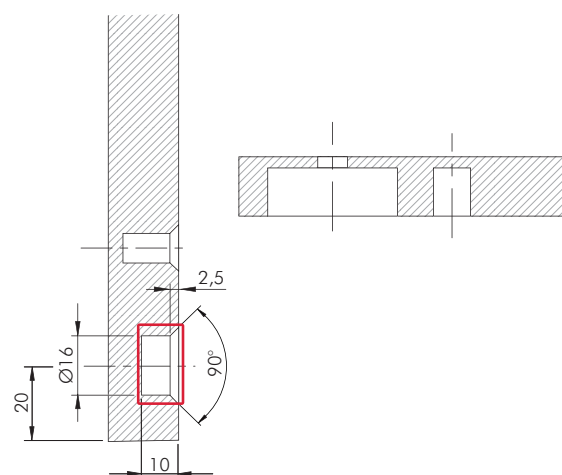
= on request



1220101000



HSS	= on request
123	
<b>3175205000</b>	<b>R</b>
<b>3175211000</b>	<b>L</b>

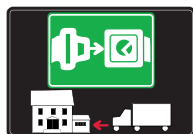


HSS	= on request
123	
<b>3175202000</b>	



# SYMBOLS AND FINISHES LEGEND

## SYMBOLS



= SHELF SAFELY LOCKED DURING TRANSPORTATION AND AT HOME.



= ANTI-TURNOVER LOCKING SYSTEM



= NORMS / PATENTS



= PHILLIPS / POZIDRIV



= WITH BUFFER



= PART NO.



= BLADE SLOT



= WITH MAGNET



= PCS. PER PACKAGE



= COMBI SLOT



= HEXAGONAL SOCKET



= NEWTON



= CAPACITY LOADING



= HEXALOBULAR SOCKET



= FRICTION



= WOOD / GLASS THICKNESS



= COUNTERSUNK HEAD



= AUTOMATIC



= HOLE DIAMETER



= PAN HEAD



= DROP DOWN



= DIAMETER



= FLANGE HEAD



= LENGTH



= FLAT HEAD



= STANDARD HINGE



= HEIGHT



= TRILOBULAR SCREW



= KIMANA HINGE



= RIGHT VERSION



= SELF-TAPPING SCREW



= FLAP HINGE



= LEFT VERSION



= EURO THREAD



= WITH SPRING



= SETTING CODE



= METRIC THREAD



= WITHOUT SPRING



= PCS. PER PAD



= PRE-INSERTED SCREW



= REVERSED SPRING



= CUT ON REQUEST



= PRE-INSERTED SCREW AND SPREADING BUSH



= SELF ADHESIVE



= WITH FLANGE

NOTE: Printing errors and omissions may exist despite our best efforts to ensure accuracy. We reserve the right to alter specifications without notice.



## MATERIALS

<b>ZA</b> = Zinc Alloy	<b>ST</b> = Steel	<b>HSS</b> = High Speed Steel	<b>BR</b> = Brass	<b>ABS</b> = Acrylonitrile Butadiene Styrene
<b>ZAnk</b> = Nickel-plated Zinc Alloy	<b>STzk</b> = Zinc-plated Steel	<b>AL</b> = Aluminium	<b>WD</b> = Wood	<b>EVA</b> = Ethylene Vinyl Acetate
<b>EP</b> = <b>ENGINEERING PLASTIC</b>		+ <b>EP</b> = other engineering plastic available on request		
		<b>SR</b> = <b>SOFT RUBBER</b> + <b>SR</b> = other soft rubber available on request		
<b>EPn</b> = Natural Engineering Plastic	<b>EPc</b> = Clear Engineering Plastic	<b>SRn</b> = Natural Soft Rubber		
<b>EPw</b> = White Engineering Plastic	<b>EPg</b> = Grey Engineering Plastic	<b>SRw</b> = White Soft Rubber		
<b>EPb</b> = Black Engineering Plastic	<b>EPa</b> = Anthracite Engineering Plastic	<b>SRb</b> = Black Soft Rubber		

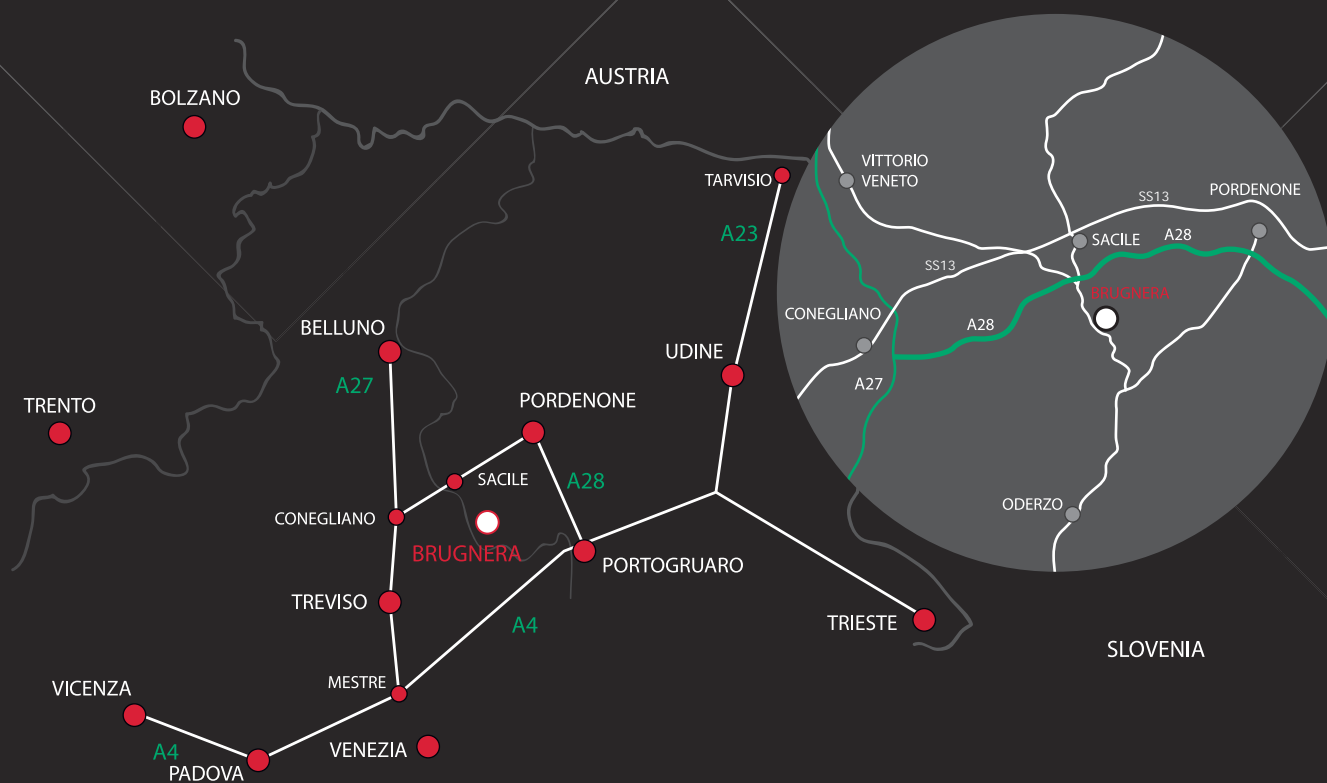


## FINISHES



+ **OTHER FINISHES AVAILABLE ON REQUEST**

PART NO.	FINISHES	PART NO.	FINISHES	PART NO.	FINISHES
<b>00</b>	Insignificant finish	<b>IF</b>	Grey 7	<b>XE</b>	Inox
<b>AA</b>	Natural	<b>IJ</b>	Light Grey	<b>YA</b>	Nickel-plated
<b>AB</b>	White	<b>IL</b>	Grey 20	<b>YC</b>	Matt Nickel-plated
<b>AE</b>	White 9010	<b>IN</b>	Grey met. 26	<b>YD</b>	Satin-finished Nickel-plated
<b>EA</b>	Black	<b>JG</b>	Aluminium 5	<b>YQ</b>	Black Nickel
<b>EC</b>	Matt Black	<b>JL</b>	Aluminium PE 11	<b>Z9</b>	Black Zinc
<b>EE</b>	Anthracite	<b>JM</b>	Aluminium RAL 9006	<b>ZN</b>	Zinc-plated
<b>EW</b>	Grey 9007	<b>KB</b>	Bright Chrome	<b>ZQ</b>	Bright Gold
<b>FU</b>	Gunmetal	<b>KC</b>	Matt Chrome	<b>ZZ</b>	Clear/Transparent
<b>FV</b>	Gunmetal V52	<b>LD</b>	Brown 8019		
<b>GR</b>	Zamak Raw	<b>RO</b>	Red		
<b>HA</b>	Brass-Plated	<b>UT</b>	T-Met 9007		
<b>HH</b>	Tropicalized	<b>UZ</b>	T-Met		
<b>HL</b>	Raw Brass	<b>WA</b>	Bronzed		
<b>HX</b>	Graphite	<b>WI</b>	Burnished		
<b>IA</b>	Grey	<b>XD</b>	Satin-finished Steel		



[www.italianaferramenta.com](http://www.italianaferramenta.com)

ITALIANA FERRAMENTA SRL - Viale Europa 17 I - 33070 Brugnara (PN)  
Tel. +39 0434 428211 Fax +39 0434 428242 E-mail: [info@italianaferramenta.it](mailto:info@italianaferramenta.it)