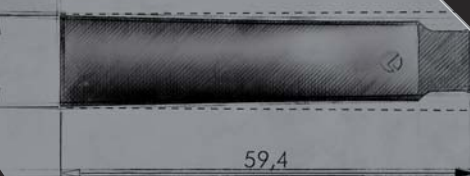




K LOCK



PUSH CATCHES
AND MAGNETIC
CATCHES

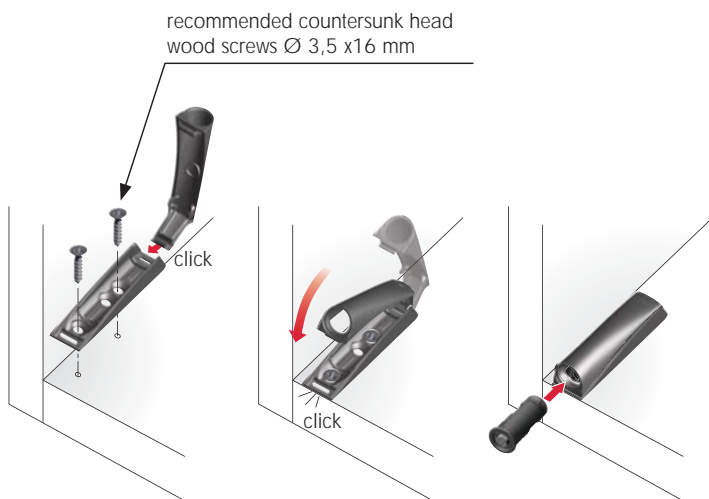


K LOCK

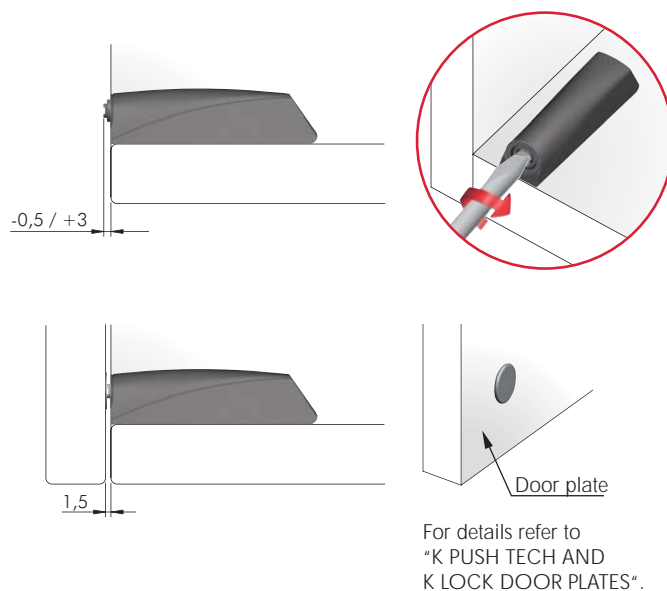


K LOCK is a magnetic system to safely keep the door closed. Suitable for unsprung or Flap/Piano hinges, K LOCK can be either embedded into the panel through a $\varnothing 10$ mm hole, or installed visible, fixed with adapter housing. K LOCK is available in three colors: white, anthracite and light grey. A 3,5 mm adjustment can be carried out by using a 1,2x6,5 mm blade screwdriver.

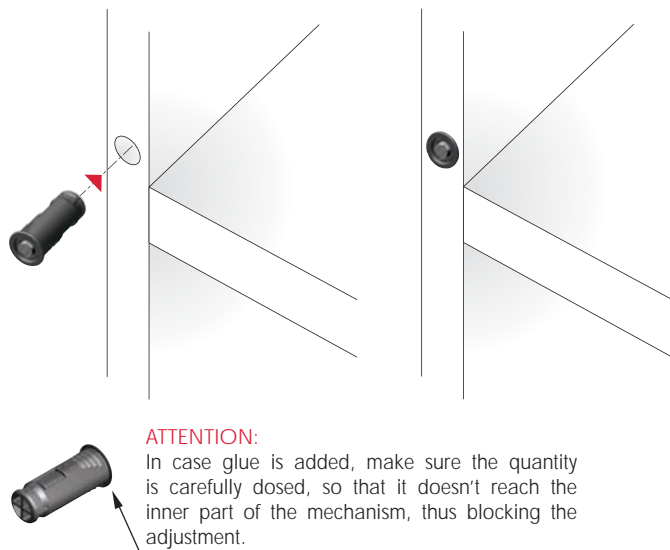
INSTALLATION THROUGH ADAPTER HOUSING



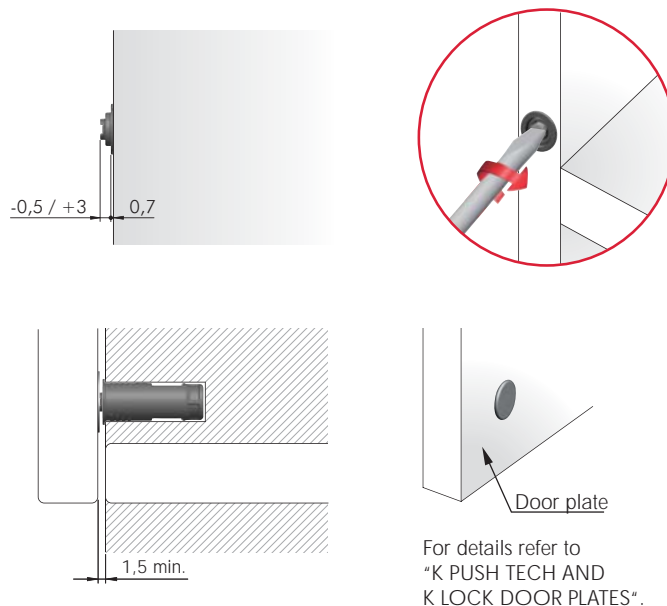
ADJUSTMENT

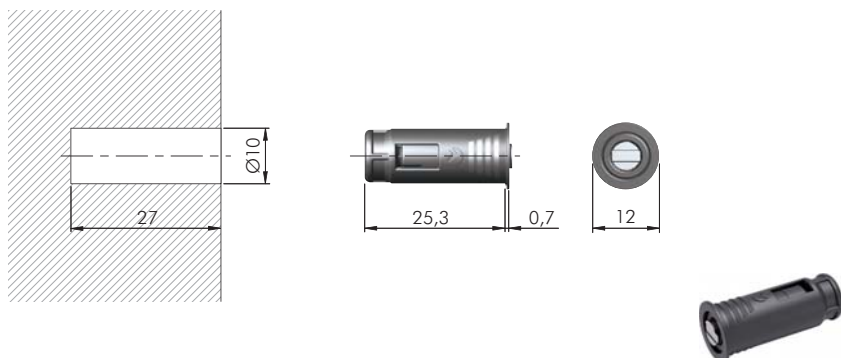


INSTALLATION TO BE EMBEDDED INSIDE THE PANEL



ADJUSTMENT





ST

EP



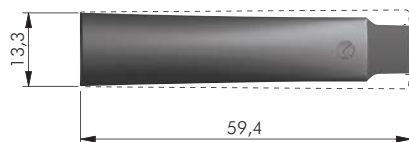
= 100 pcs.



55007010EE

55007010IJ

55007010AB



EP



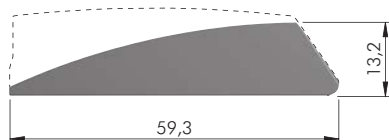
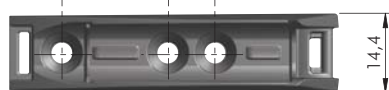
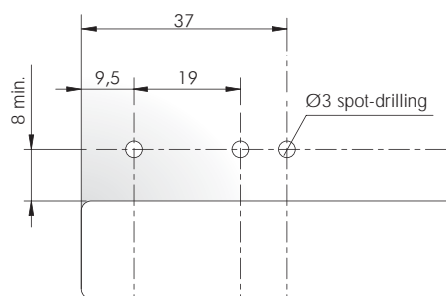
= 100 pcs.



57015020EE

57015020IJ

57015020AB



= Ø 3 mm

EP



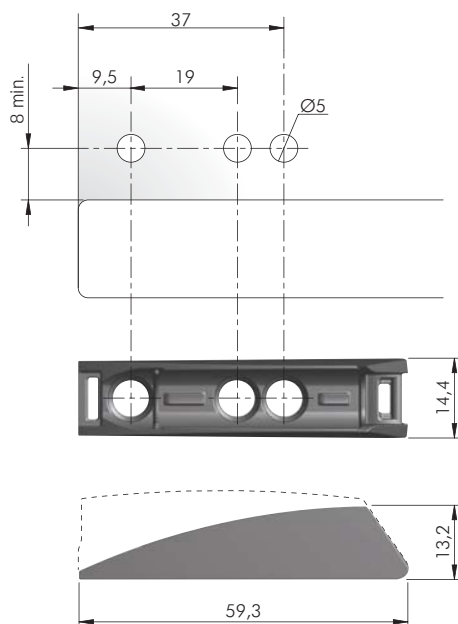
= 100 pcs.



57015040EE

57015040IJ

57015040AB



= Ø 5 mm

EP



= 100 pcs.

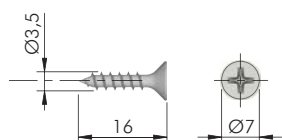


57015060EE

57015060IJ

57015060AB

FIXING ACCESSORY FOR K LOCK ADAPTER PLATES PART NO. 57015040



= Ø 3 mm



= PZ2

ST

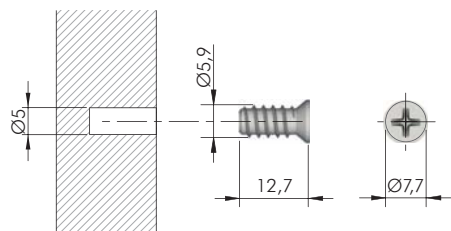


= 1.000 pcs.



60101390ZN

FIXING ACCESSORY FOR K LOCK ADAPTER PLATES PART NO. 57015060



= Ø 5 mm



= PZ2

ST



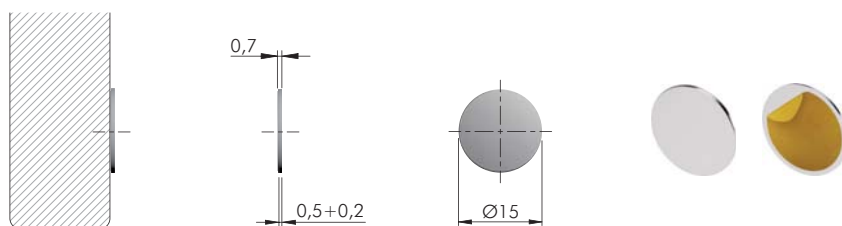
= 5.000 pcs.



60501050YA



ADHESIVE DOOR PLATES

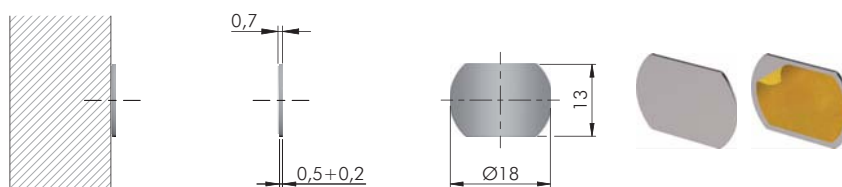


ST

= 100 pcs.



55006160XD

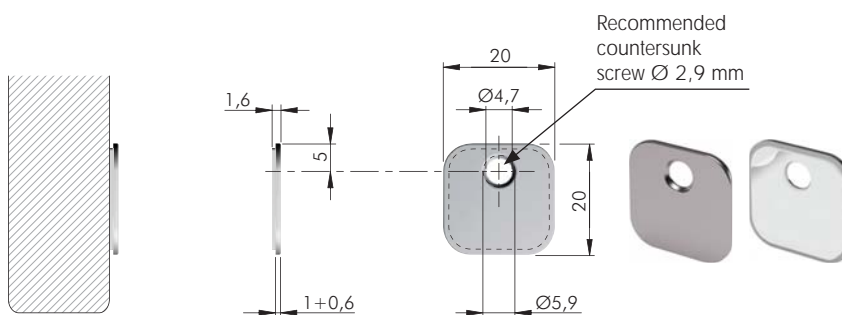


ST

= 100 pcs.



55006200YA

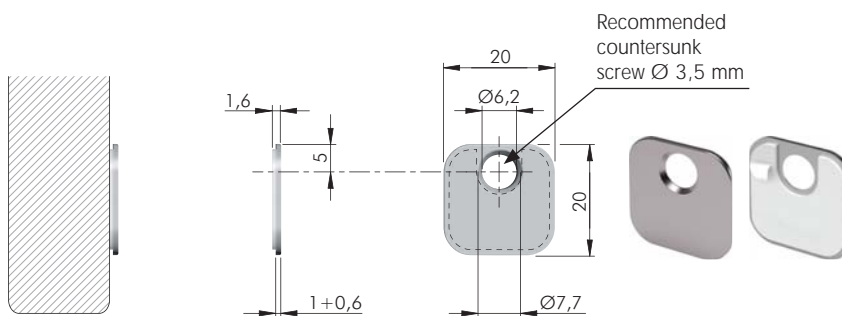


ST

= 100 pcs.



55006210YA



ST

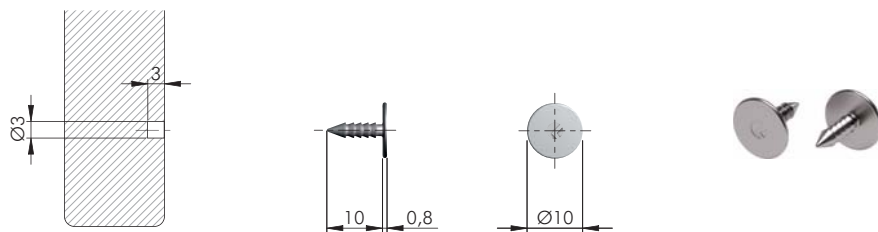
= 100 pcs.



55006240YA



DOOR PLATES

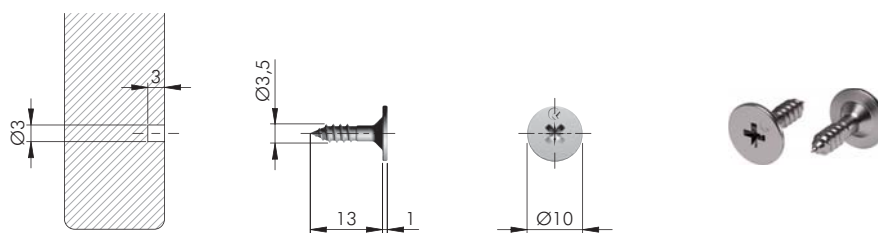


ST

100 pcs.



55006030YA

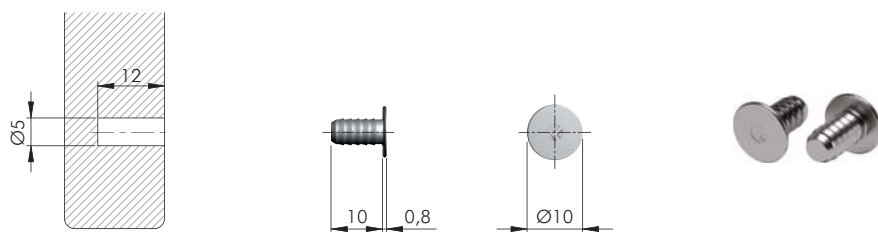


ST

100 pcs.



55006100YA

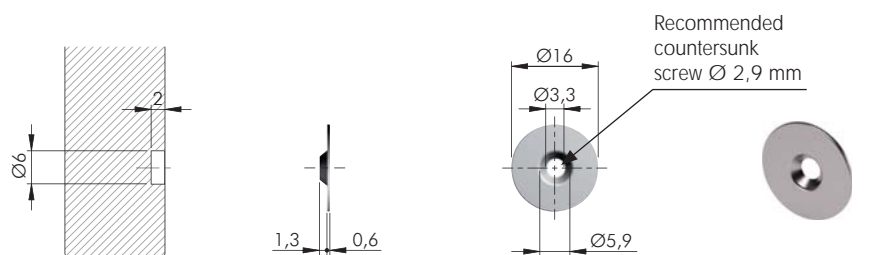


ST

100 pcs.



55006040YA

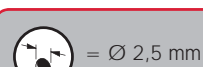
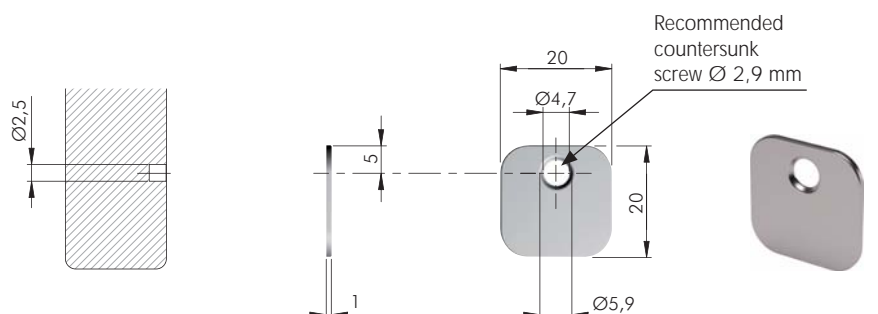


ST

100 pcs.



55006130YA



ST

100 pcs.



55006120YA



FIXING ACCESSORIES

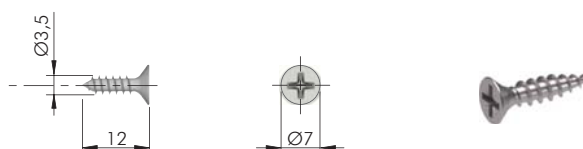
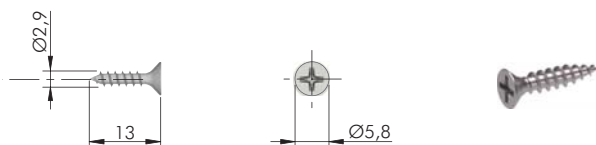
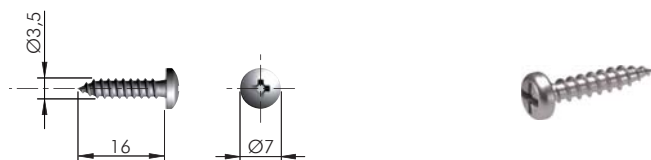
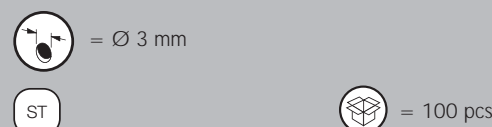
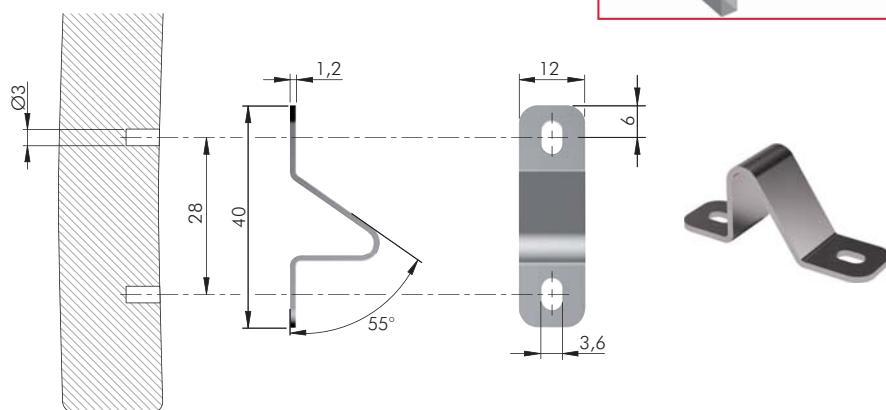
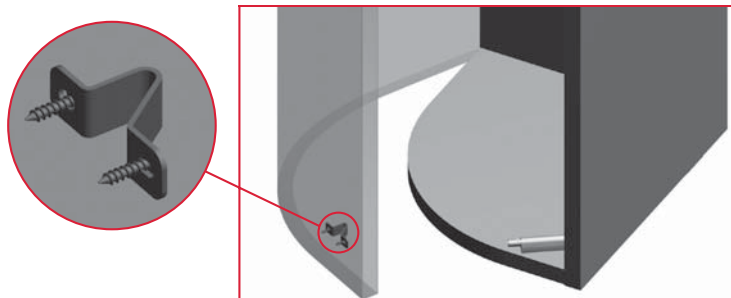


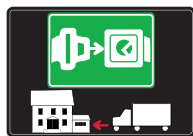
PLATE FOR K PUSHTECH WITH ADAPTER HOUSING FOR CURVED DOORS





SYMBOLS AND FINISHES LEGEND

SYMBOLS



= SHELF SAFELY LOCKED DURING TRANSPORTATION AND AT HOME.



= ANTI-TURNOVER LOCKING SYSTEM



= NORMS / PATENTS



= PHILLIPS / POZIDRIV



= WITH BUFFER



= PART NO.



= BLADE SLOT



= WITH MAGNET



= PCS. PER PACKAGE



= COMBI SLOT



= HEXAGONAL SOCKET



= NEWTON



= CAPACITY LOADING



= HEXALOBULAR SOCKET



= FRICTION



= WOOD / GLASS THICKNESS



= COUNTERSUNK HEAD



= AUTOMATIC



= HOLE DIAMETER



= PAN HEAD



= DROP DOWN



= DIAMETER



= FLANGE HEAD



= LENGTH



= FLAT HEAD



= STANDARD HINGE



= HEIGHT



= TRILOBULAR SCREW



= KIMANA HINGE



= RIGHT VERSION



= SELF-TAPPING SCREW



= FLAP HINGE



= LEFT VERSION



= EURO THREAD



= WITH SPRING



= SETTING CODE



= METRIC THREAD



= WITHOUT SPRING



= PCS. PER PAD



= PRE-INSERTED SCREW



= REVERSED SPRING



= CUT ON REQUEST



= PRE-INSERTED SCREW AND SPREADING BUSH



= WITH FLANGE



= SELF ADHESIVE

NOTE: Printing errors and omissions may exist despite our best efforts to ensure accuracy. We reserve the right to alter specifications without notice.

MATERIALS

ZA = Zinc Alloy

ST = Steel

HSS = High Speed Steel

BR = Brass

ABS = Acrylonitrile Butadiene Styrene

ZAnk = Nickel-plated Zinc Alloy

STzk = Zinc-plated Steel

AL = Aluminium

WD = Wood

EVA = Ethylene Vinyl Acetate

EP = ENGINEERING PLASTIC

+ **EP** = other engineering plastic available on request

SR = SOFT RUBBER

+ **SR** = other soft rubber available on request

EPn = Natural Engineering Plastic

EPc = Clear Engineering Plastic

SRn = Natural Soft Rubber

EPw = White Engineering Plastic

EPg = Grey Engineering Plastic

SRw = White Soft Rubber

EPb = Black Engineering Plastic

EPa = Anthracite Engineering Plastic

SRb = Black Soft Rubber

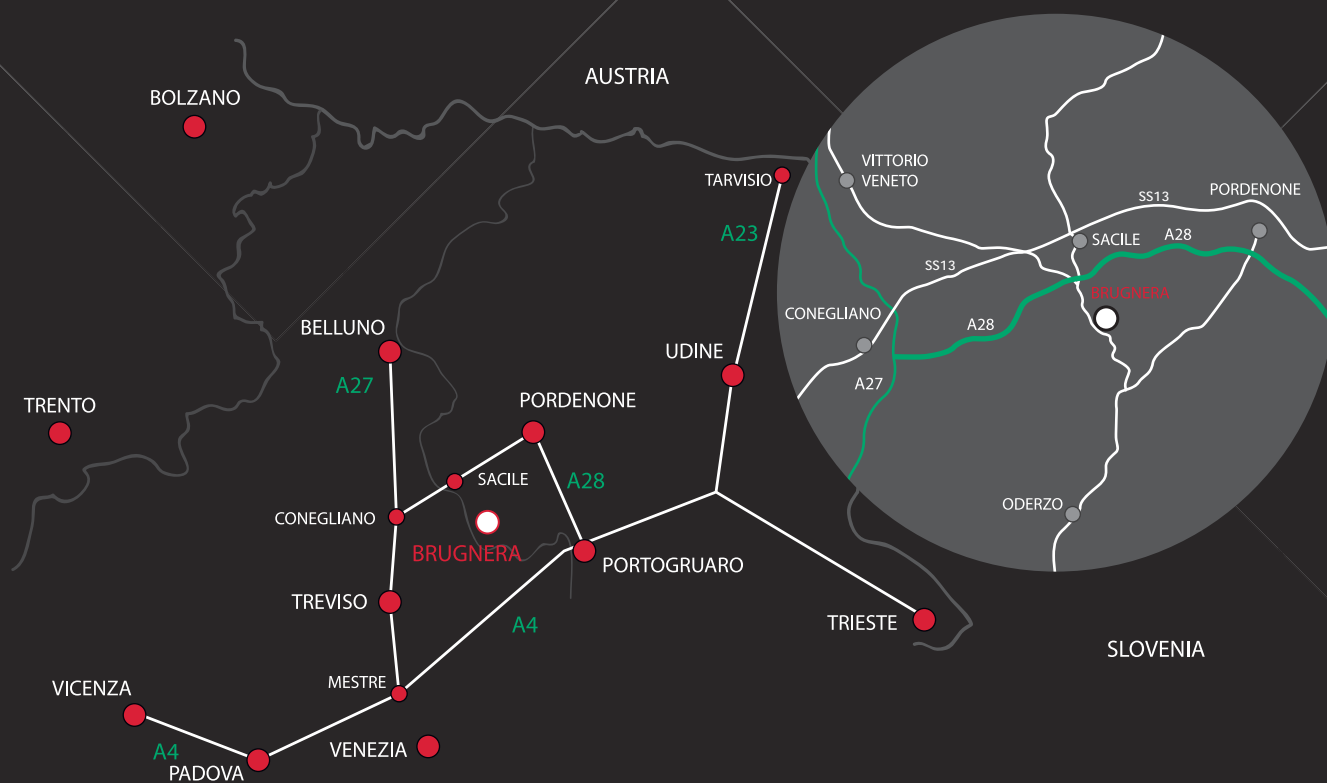


FINISHES



+ = OTHER FINISHES AVAILABLE ON REQUEST

PART NO.	FINISHES	PART NO.	FINISHES	PART NO.	FINISHES
00	Insignificant finish	IF	Grey 7	XE	Inox
AA	Natural	IJ	Light Grey	YA	Nickel-plated
AB	White	IL	Grey 20	YC	Matt Nickel-plated
AE	White 9010	IN	Grey met. 26	YD	Satin-finished Nickel-plated
EA	Black	JG	Aluminium 5	YQ	Black Nickel
EC	Matt Black	JL	Aluminium PE 11	Z9	Black Zinc
EE	Anthracite	JM	Aluminium RAL 9006	ZN	Zinc-plated
EW	Grey 9007	KB	Bright Chrome	ZQ	Bright Gold
FU	Gunmetal	KC	Matt Chrome	ZZ	Clear/Transparent
FV	Gunmetal V52	LD	Brown 8019		
GR	Zamak Raw	RO	Red		
HA	Brass-Plated	UT	T-Met 9007		
HH	Tropicalized	UZ	T-Met		
HL	Raw Brass	WA	Bronzed		
HX	Graphite	WI	Burnished		
IA	Grey	XD	Satin-finished Steel		



www.italianaferramenta.com

ITALIANA FERRAMENTA SRL - Viale Europa 17 I - 33070 Brugnara (PN)
Tel. +39 0434 428211 Fax +39 0434 428242 E-mail: info@italianaferramenta.it