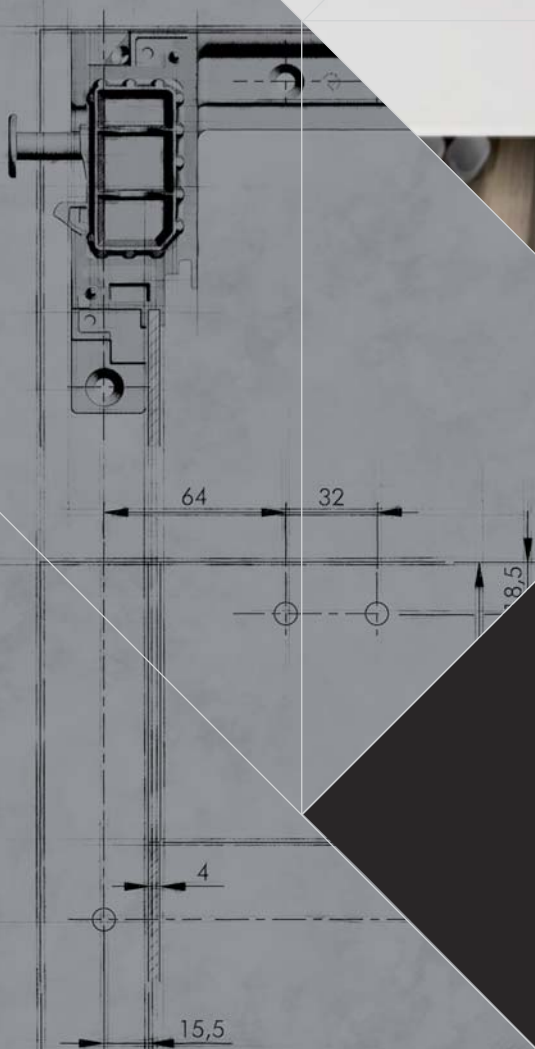


LIBRA BS

BACK PANEL WILL BE
PLACED IN THE LOWER



HANGERS

LIBRA BS APPLICATIONS

BENEFITS OF LIBRA BS HANGING SYSTEM:

- Vertical and in-depth adjustments, with integrated locking of the cabinet, can be easily and smoothly carried out from the inside.
- The hanging system is never interfering with the slides for drawers thanks to the slim side bracket wings.
- Absolutely no mills, nor grooves required on the side panels.

In the **current absence of a unifying European norm** which sets the standards for testing procedures aimed at defining loading capacities of hanging systems conceived for suspended base units, we Italiana Ferramenta have simulated some of the most critical scenarios. The following simulations are meant to give our customers valid reference points concerning cabinet dimensions, weights, recommended loading capacity even when loaded drawers are opened. **The reported data, empirically obtained, exclusively refer to the constructions and examples shown, correctly positioned and assembled.**

The customer must ensure that the wall is of suitable quality and structure.

Other important factors to be taken into consideration are determined by:

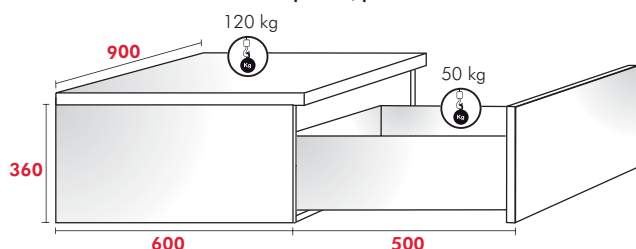
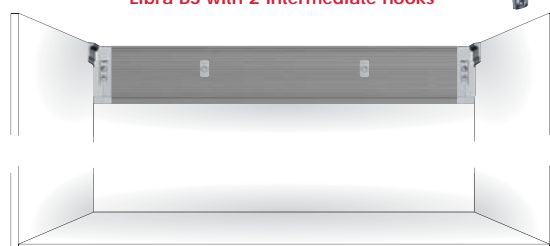
- the type of side panel, the actual thickness and the material used.
- the type and dimensions of the screws used.
- the actual positioning, depth and width of the groove milled for the back side installation.
- the loading capacity of the drawer slides used as well as the actual construction of the drawer.

We always recommend to test a complete cabinet.

For cases which differ from the ones reported, please contact us.

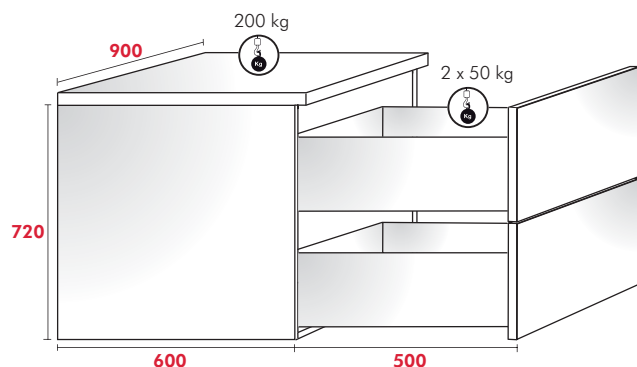


Libra BS with 2 intermediate hooks



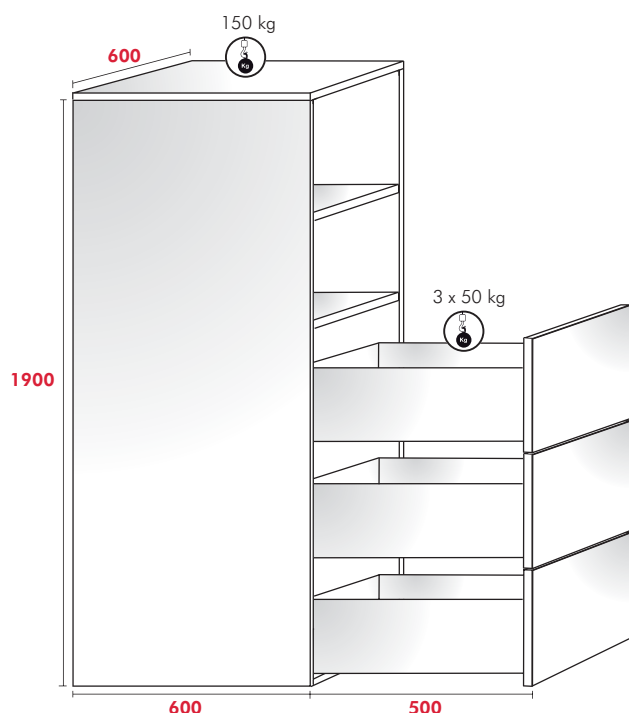
The reported data, empirically obtained, exclusively refer to the constructions and examples shown, correctly positioned and assembled.

Libra BS with 2 intermediate hooks



The reported data, empirically obtained, exclusively refer to the constructions and examples shown, correctly positioned and assembled.

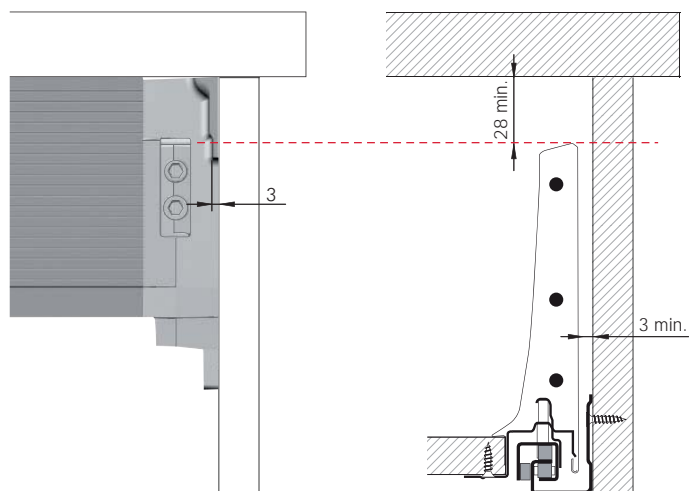
Libra BS with 1 intermediate hook



The reported data, empirically obtained, exclusively refer to the constructions and examples shown, correctly positioned and assembled.



The hanging system is never interfering with the slides for drawers thanks to the slim side bracket wings.

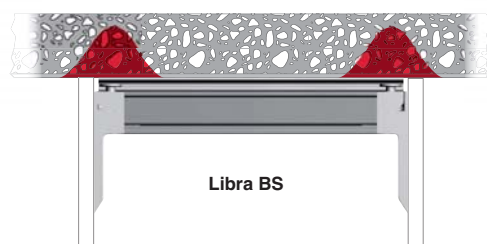


Easy access to the adjustments

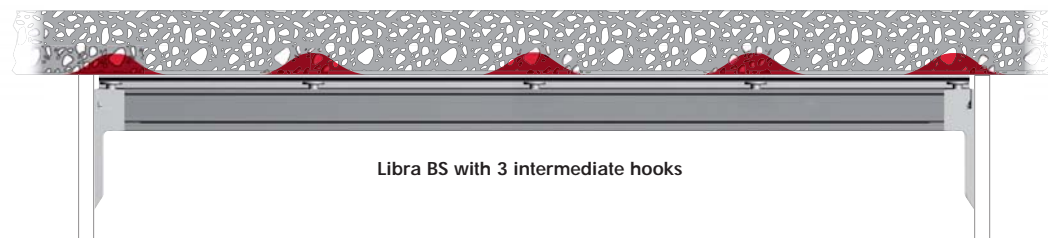
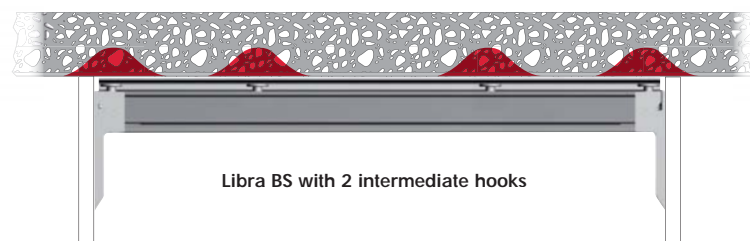
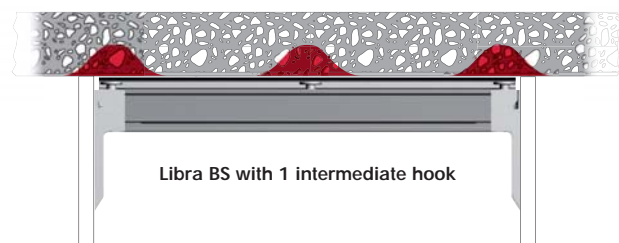


The slim side bracket makes the use of tools very easy and comfortable as there is plenty of space between the side and the allen wrench.

■ = STRESS INTENSITY LEVEL ON THE WALL



By adding intermediate hooks to Libra BS, the loading capacity is more evenly distributed, thus sensibly reducing the stress intensity level on the wall.



LIBRA BS



PATENTED

LIBRA BS is the innovative hanging system for suspended kitchen base units which require big capacity load as well as bumping loads.

LIBRA BS offers the customer the possibility to several hanging points on the wall, so that the load on every single wall plug is sensibly reduced, thus minimizing the risk of coming out of the wall.

A higher security standard is also guaranteed by the robustness of the wall bar, which, thanks to its thickness, gives the construction the highest stability thanks to its large supporting surface. From a security point of view, the placement of the fixing holes to the wall has been optimized. LIBRA BS is easily adjustable in vertical and in depth even when the base unit is already fixed to the wall.

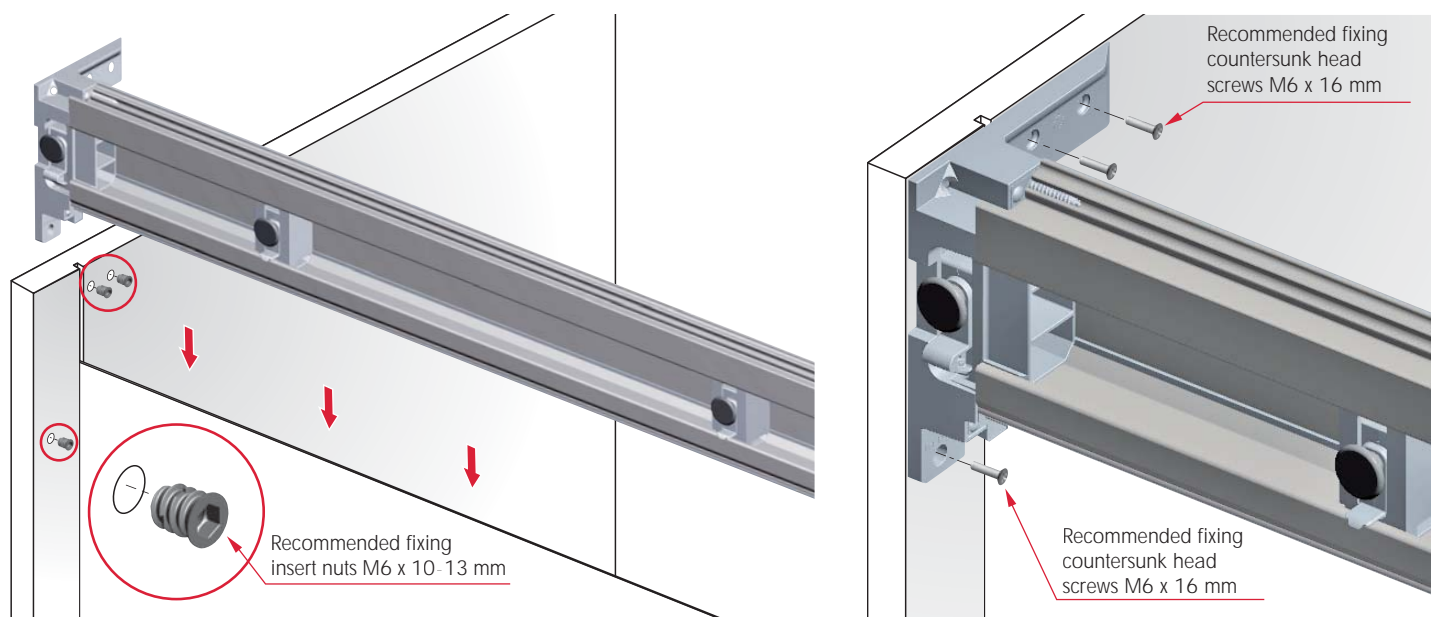
To further improve the safety of LIBRA BS, the in-depth adjustment automatically activates the anti-turnover device.

LIBRA BS is the ideal system for very high loads, even with very deep constructions and particularly large and heavy drawers.

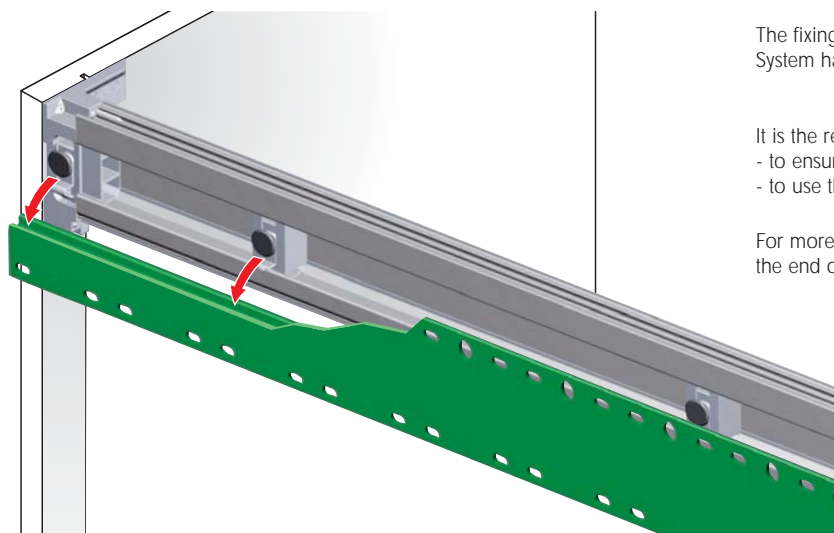
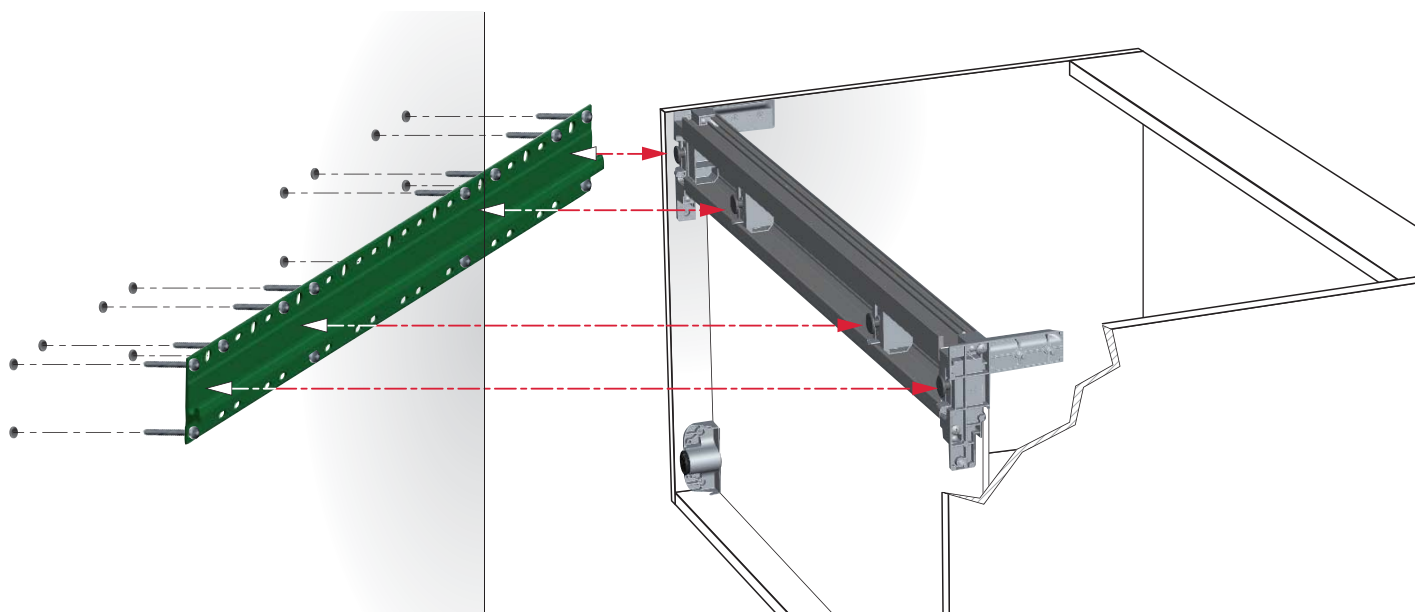




APPLICATION OF THE LIBRA BASE SYSTEM TO THE SUSPENDED BASE CABINET



WALL BAR INSTALLATION AND CABINET HANGING

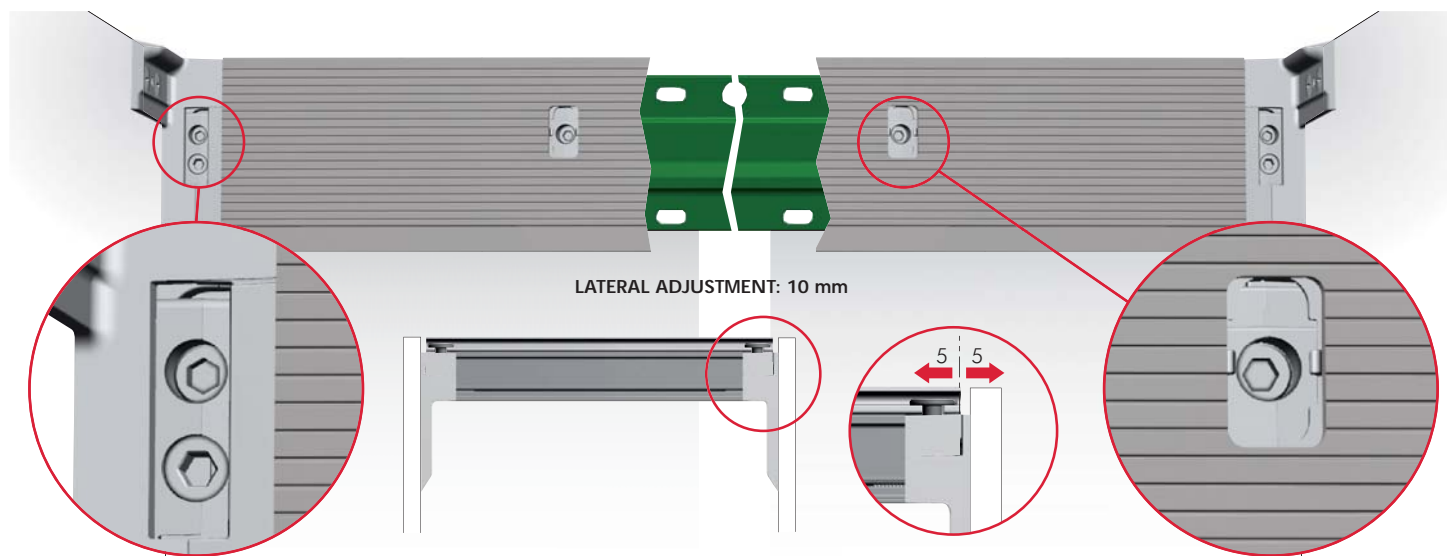


The fixing screws for the wall bar have to be aligned with the LIBRA Base System hanging hooks.

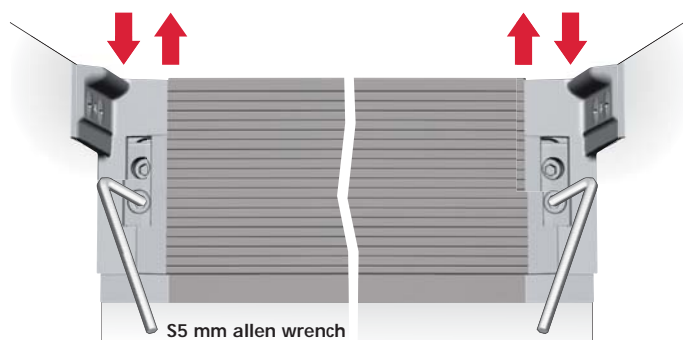
It is the responsibility of the customer:

- to ensure that the wall is of a suitable quality to hold the unit fixing in place.
- to use the proper hardware fittings according to the construction of the wall.

For more specific information, please refer to the WARNINGS section at the end of the catalogue.

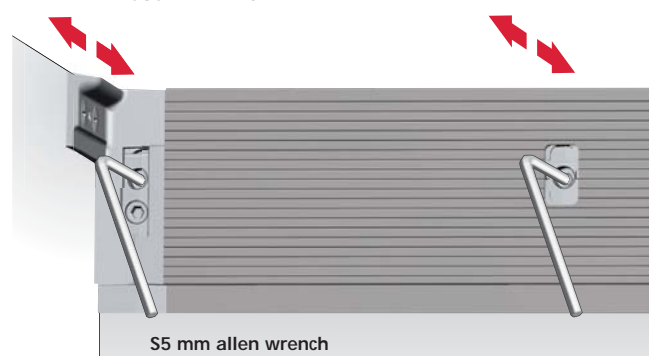


VERTICAL ADJUSTMENT: 15 mm



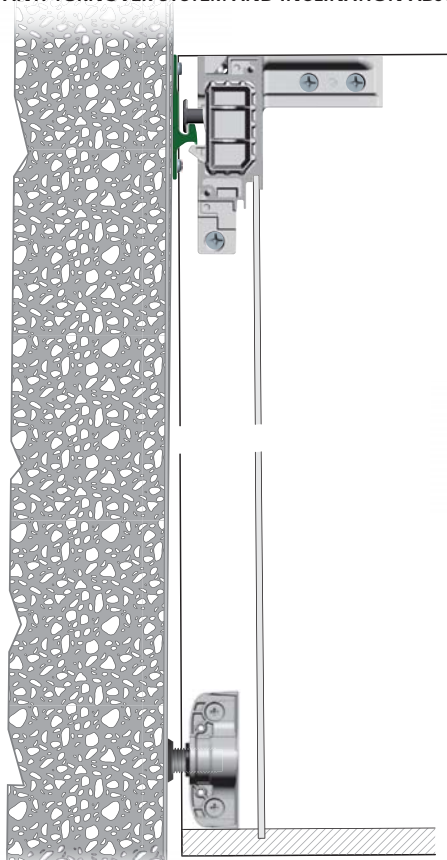
Vertical adjustment to be carried out through both side hangers. The intermediate hooks consequently follow the vertical adjustment carried out through the side hangers.

IN-DEPTH ADJUSTMENT: 10 mm



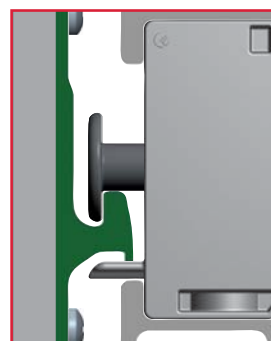
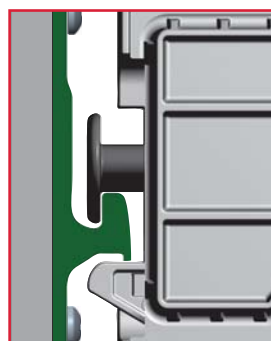
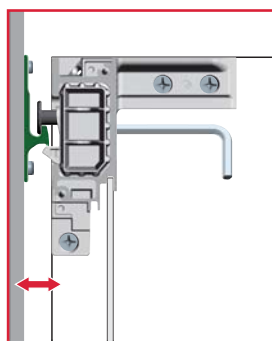
In-depth adjustment to be carried out progressively through side hangers and intermediate hooks.

ANTI-TURNOVER SYSTEM AND INCLINATION ADJUSTMENT

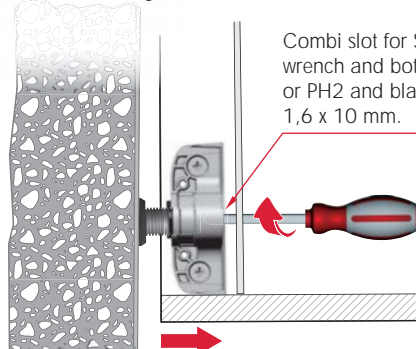


SIDE HANGERS

INTERMEDIATE HOOKS



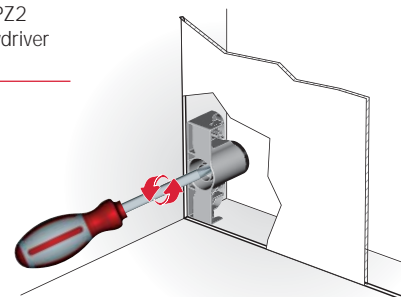
The self-inserting anti-turnover device is carried out after 6 mm of in-depth adjustment.



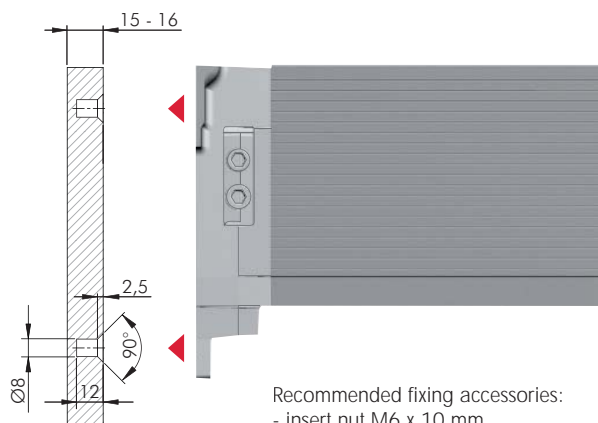
Combi slot for S6 mm allen wrench and both cross PZ2 or PH2 and blade screwdriver 1,6 x 10 mm.

Inclination adjustment if required

- For details refer to section "LIBRA BS LEVeller"

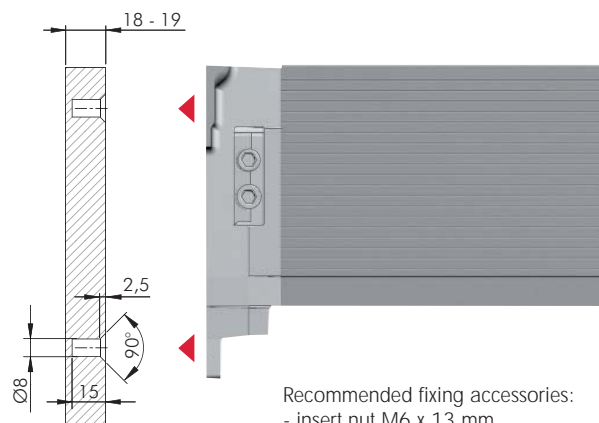


SIDE PANEL 15 - 16 MM THICK



Recommended fixing accessories:
- insert nut M6 x 10 mm
- countersunk head screw M6 x 16 mm

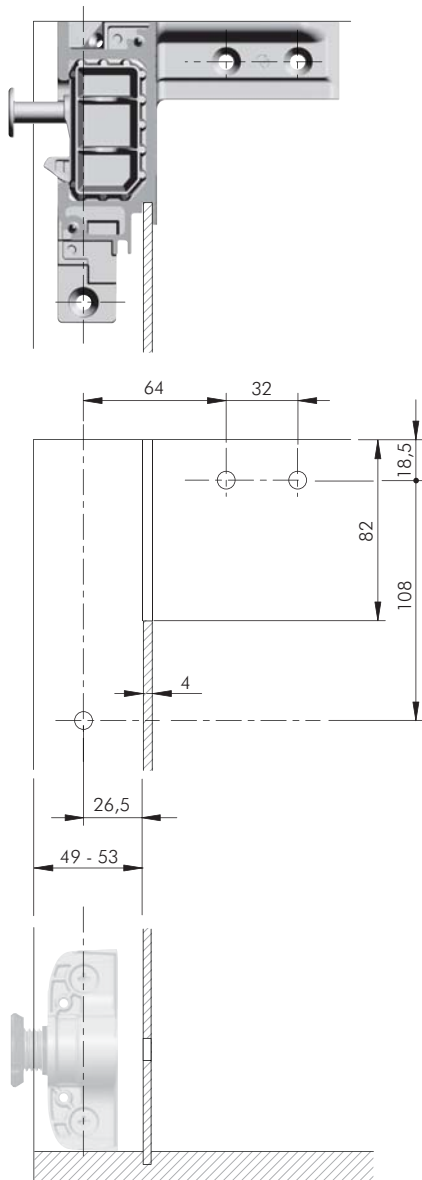
SIDE PANEL 18 - 19 MM THICK



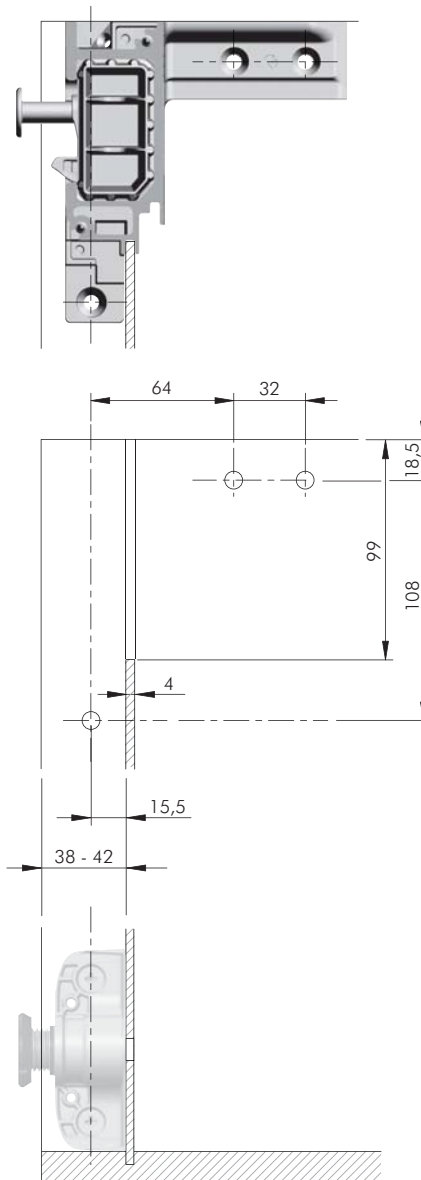
Recommended fixing accessories:
- insert nut M6 x 13 mm
- countersunk head screw M6 x 16 mm

SIDE PANEL DRILLING AND MILLING FOR VARIOUS BACK PANEL DIMENSIONS

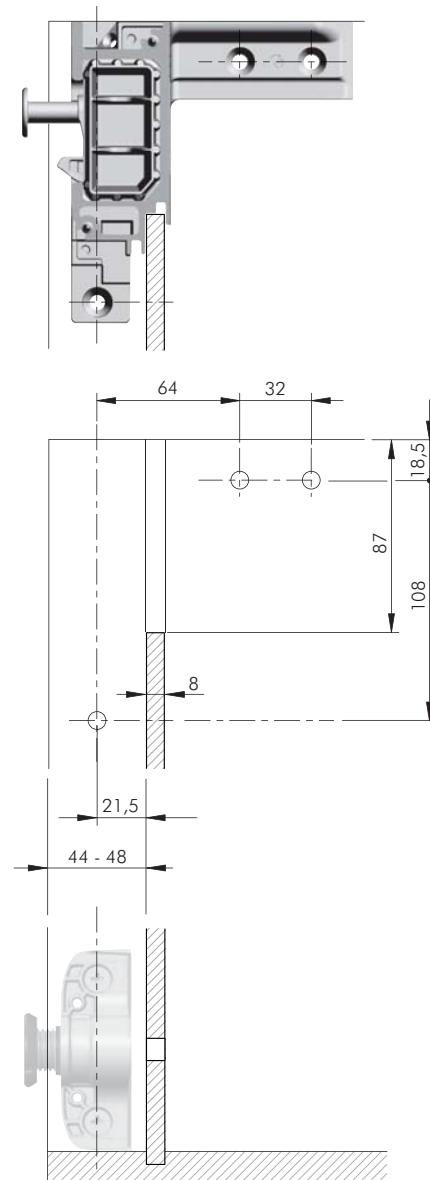
BACK PANEL WOOD THICKNESS 4 MM
PLACED IN THE HIGHER SLOT



BACK PANEL WOOD THICKNESS 4 MM
PLACED IN THE LOWER SLOT



BACK PANEL WOOD THICKNESS 8 MM



LIBRA BS WITH END ELEMENTS PRE-MOUNTED

READY FOR INSTALLATION



NOTE:

- LIBRA BS is supplied in carton box including 1 piece plus 1 LIBRA BS WALL BAR.
- LIBRA BS WALL BAR is supplied 10 mm shorter than LIBRA BS for lateral adjustment.



If **L** in mm is equal to a whole number use following code system:

L in mm minus 66 (which includes plus 0,5 tolerance)

650XXXXY00

0 = without intermediate pilot hook
 1 = with 1 intermediate pilot hook
 2 = with 2 intermediate pilot hooks
 3 = with 3 intermediate pilot hooks

If **L** in mm is equal to a number ending with a plus 0,5 mm use following code system:

L in mm minus 65,5

650XXXXY00

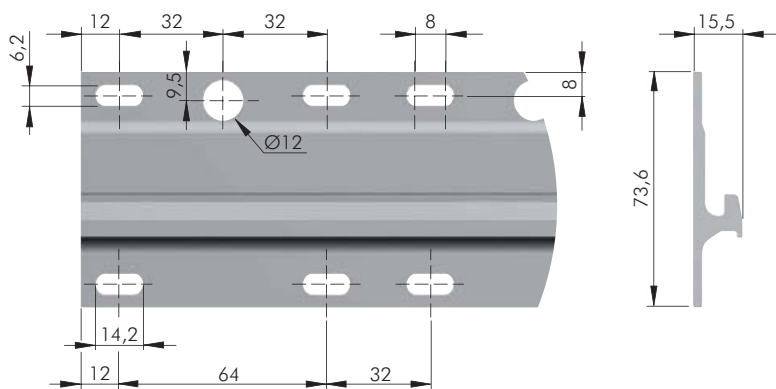
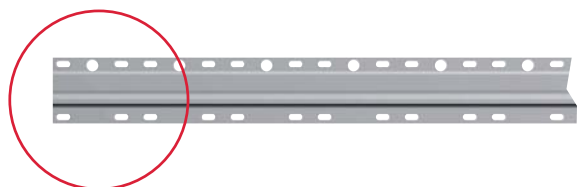
Z = without intermediate hook
 A = with 1 intermediate hook
 B = with 2 intermediate hooks
 C = with 3 intermediate hooks

SUGGESTED COMBINATIONS:

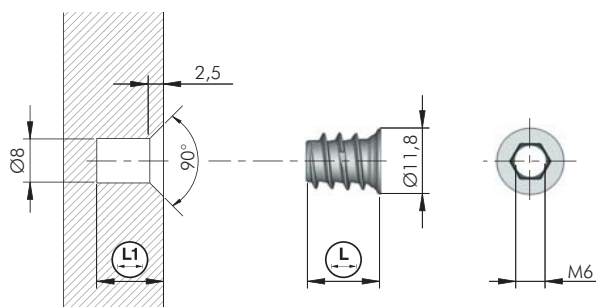
CABINET WIDTH (mm)	INTERMEDIATE HOOK
450	-
500	-
600	1
700	1
800	2
900	2
1000	2
1100	2
1200	3
1500	3



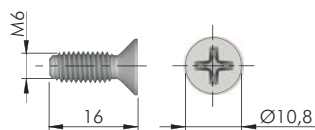
WALL BAR DETAIL



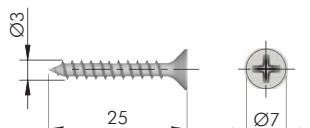
LIBRA BS FIXING ACCESSORIES



= Ø 8 mm	= M6	
ZA	= 5.000 pcs.	
20102010GR	10	12
20102020GR	13	15



	= M6	= PZ2	
ST	= on request		
60308040ZN			

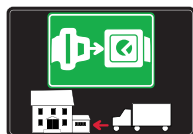


		= PZ2	
ST	= on request		
60101240ZN			



SYMBOLS AND FINISHES LEGEND

SYMBOLS



= SHELF SAFELY LOCKED DURING TRANSPORTATION AND AT HOME.



= ANTI-TURNOVER LOCKING SYSTEM



= NORMS / PATENTS



= PHILLIPS / POZIDRIV



= WITH BUFFER



= PART NO.



= BLADE SLOT



= WITH MAGNET



= PCS. PER PACKAGE



= COMBI SLOT



= HEXAGONAL SOCKET



= NEWTON



= CAPACITY LOADING



= HEXALOBULAR SOCKET



= FRICTION



= WOOD / GLASS THICKNESS



= COUNTERSUNK HEAD



= AUTOMATIC



= HOLE DIAMETER



= PAN HEAD



= DROP DOWN



= DIAMETER



= FLANGE HEAD



= LENGTH



= FLAT HEAD



= STANDARD HINGE



= HEIGHT



= TRILOBULAR SCREW



= KIMANA HINGE



= RIGHT VERSION



= SELF-TAPPING SCREW



= FLAP HINGE



= LEFT VERSION



= EURO THREAD



= WITH SPRING



= SETTING CODE



= METRIC THREAD



= WITHOUT SPRING



= PCS. PER PAD



= PRE-INSERTED SCREW



= REVERSED SPRING



= CUT ON REQUEST



= PRE-INSERTED SCREW AND SPREADING BUSH



= SELF ADHESIVE



= WITH FLANGE

NOTE: Printing errors and omissions may exist despite our best efforts to ensure accuracy. We reserve the right to alter specifications without notice.

MATERIALS

ZA = Zinc Alloy	ST = Steel	HSS = High Speed Steel	BR = Brass	ABS = Acrylonitrile Butadiene Styrene
ZAnk = Nickel-plated Zinc Alloy	STzk = Zinc-plated Steel	AL = Aluminium	WD = Wood	EVA = Ethylene Vinyl Acetate
EP = ENGINEERING PLASTIC + EP = other engineering plastic available on request			SR = SOFT RUBBER + SR = other soft rubber available on request	
EPn = Natural Engineering Plastic	EPc = Clear Engineering Plastic	SRn = Natural Soft Rubber		
EPw = White Engineering Plastic	EPg = Grey Engineering Plastic	SRw = White Soft Rubber		
EPb = Black Engineering Plastic	EPa = Anthracite Engineering Plastic	SRb = Black Soft Rubber		

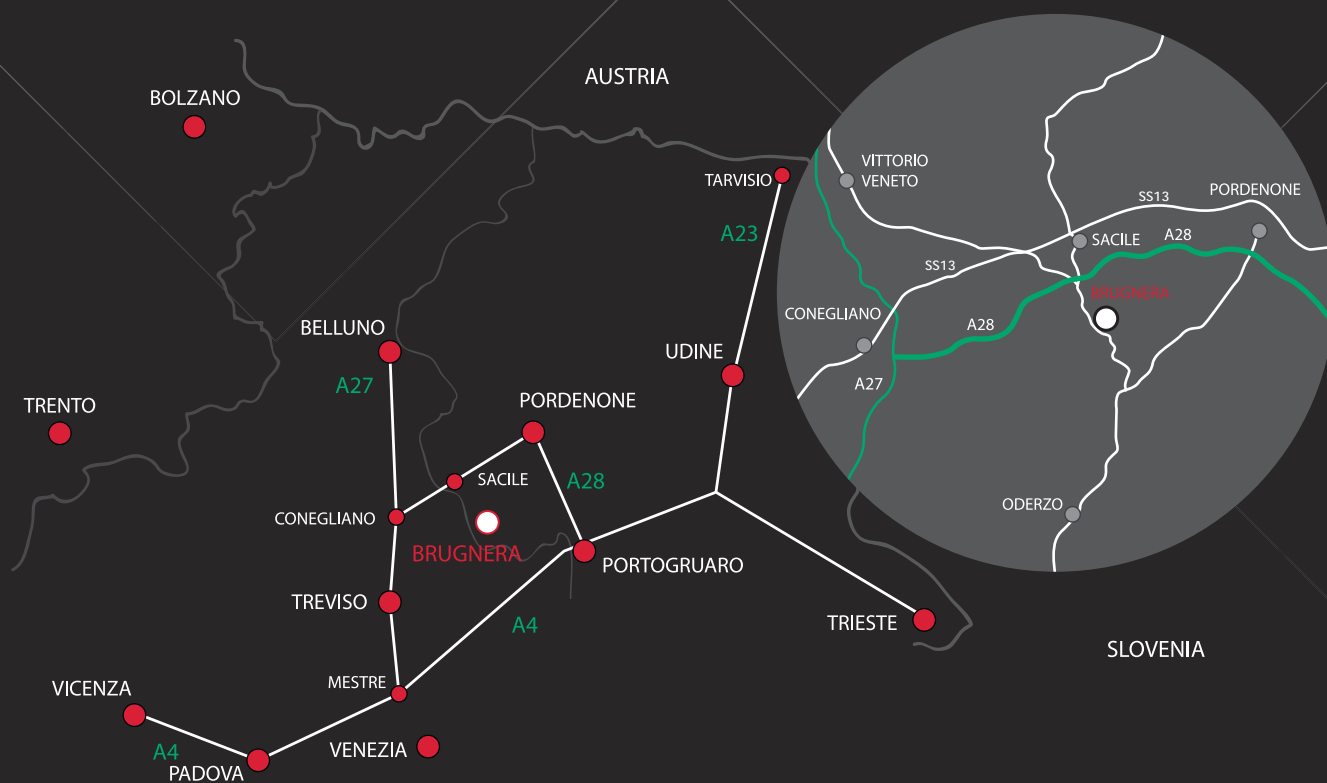


FINISHES



+ = OTHER FINISHES AVAILABLE ON REQUEST

PART NO.	FINISHES	PART NO.	FINISHES	PART NO.	FINISHES
00	Insignificant finish	IF	Grey 7	XE	Inox
AA	Natural	IJ	Light Grey	YA	Nickel-plated
AB	White	IL	Grey 20	YC	Matt Nickel-plated
AE	White 9010	IN	Grey met. 26	YD	Satin-finished Nickel-plated
EA	Black	JG	Aluminium 5	YQ	Black Nickel
EC	Matt Black	JL	Aluminium PE 11	Z9	Black Zinc
EE	Anthracite	JM	Aluminium RAL 9006	ZN	Zinc-plated
EW	Grey 9007	KB	Bright Chrome	ZQ	Bright Gold
FU	Gunmetal	KC	Matt Chrome	ZZ	Clear/Transparent
FV	Gunmetal V52	LD	Brown 8019		
GR	Zamak Raw	RO	Red		
HA	Brass-Plated	UT	T-Met 9007		
HH	Tropicalized	UZ	T-Met		
HL	Raw Brass	WA	Bronzed		
HX	Graphite	WI	Burnished		
IA	Grey	XD	Satin-finished Steel		



www.italianaferramenta.com

ITALIANA FERRAMENTA SRL - Viale Europa 17 I - 33070 Brugnara (PN)
Tel. +39 0434 428211 Fax +39 0434 428242 E-mail: info@italianaferramenta.it